

VORTAC HLN <b>117.7</b> Chan <b>124</b>	APP CRS <b>254°</b>	Rwy Idg TDZE Apt Elev <b>N/A</b> <b>3846</b> <b>3877</b>
---	------------------------	---

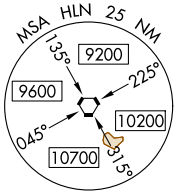
# COPTER VOR 254°

HELENA RGNL (HLN)

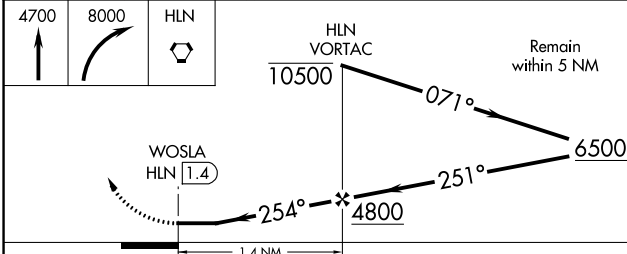
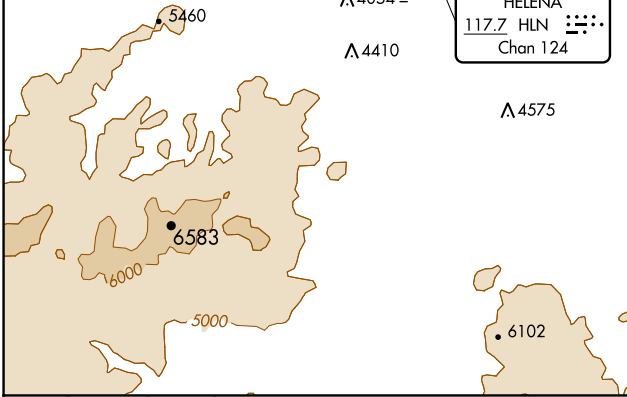
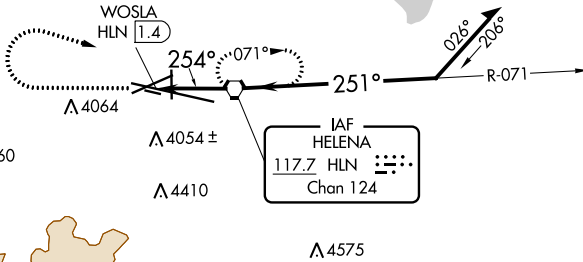
**NA** When local altimeter setting not received, procedure NA.  
 -17°C

MISSED APPROACH: Climb to 4700 then climbing right turn to 8000 direct HLN VORTAC and hold, continue climb-in-hold to 8000.

ATIS <b>120.4</b>	HELENA APP CON * <b>119.5 229.4</b>	HELENA TOWER * <b>118.3 (CTAF) 257.8</b>	GND CON <b>121.9</b>	UNICOM <b>122.95</b>
----------------------	--	---	-------------------------	-------------------------



NOTE: Designated landing area at WOSLA; intersection of Rwy 9-27 and Taxiway G.  
 NOTE: Limit final and missed approach to 90K.  
 NOTE: 800 foot descent gradient may be required for PT outbound.  
 NOTE: 675 foot descent gradient required for final approach.



ELEV 3877	TDZE 3846
-----------	-----------

REIL Rwys 9, 17 and 35  
 MIRL Rwys 5-23 and 17-35  
 HIRL Rwy 9-27

FAF to MAP 1.4 NM					
Knots	45	60	75	90	105
Min:Sec	1:53	1:24	1:07	:57	:48

CATEGORY	COPTER
H-254	4320-½ 474 (500-½)

NW-1, 05 NOV 2020 to 03 DEC 2020

NW-1, 05 NOV 2020 to 03 DEC 2020