

WAAS CH <b>72927</b> <b>W36A</b>	APP CRS <b>359°</b>	Rwy Idg TDZE Apt Elev	<b>5000</b> <b>59</b> <b>61</b>
--	------------------------	-----------------------------	---------------------------------------

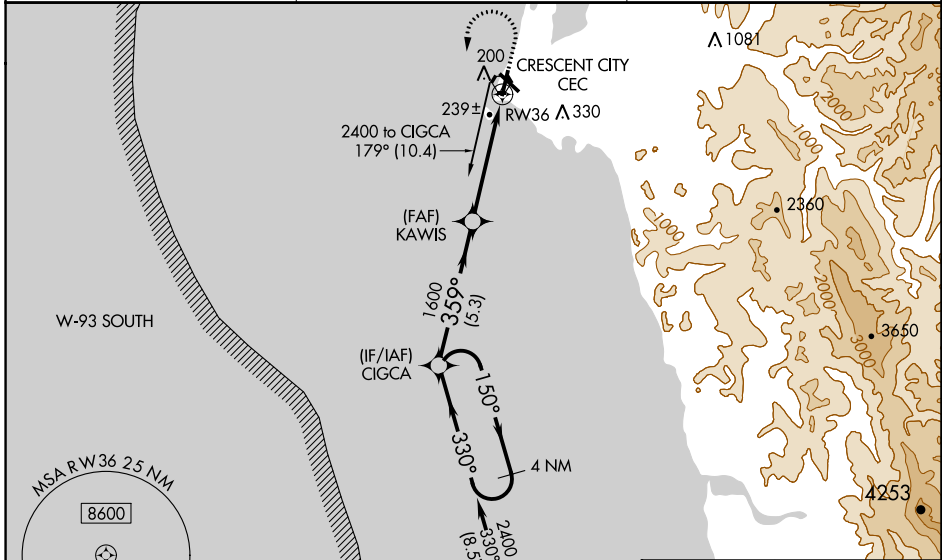
# RNAV (GPS) RWY 36

JACK MC NAMARA FIELD (CEC)

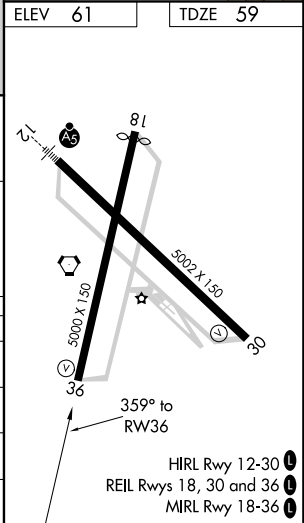
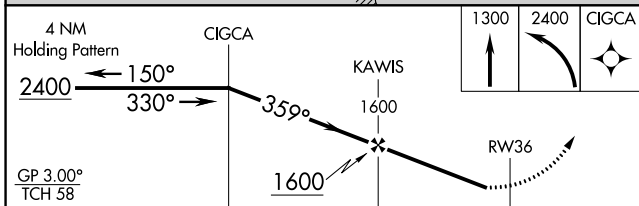
**⚠** Baro-VNAV NA when using Brookings altimeter setting. For uncompensated Baro-VNAV systems, LNAV/VNAV NA below -15°C (5°F) or above 54°C (130°F). DME/DME RNP-0.3 NA. When local altimeter setting not received, use Brookings altimeter setting and increase LPV DA to 406 feet and LNAV/VNAV DA to 505 feet and all MDA 100 feet; increase LPV all Cats and LNAV Cat C/D and Circling Cat D visibilities ¼ mile, increase LNAV/VNAV all Cats visibility ⅓ mile, and Circling Cat C visibility ½ mile. Helicopter visibility reduction below 1 SM NA. Night landing: Rwy 36 operational VGSI required, remain on or above VGSI glidepath until threshold. Night landing: Rwy 18, 30 NA at night.

**MISSED APPROACH:** Climb to 1300 then climbing left turn to 2400 direct CIGCA and hold.

ASOS <b>119.925</b>	SEATTLE CENTER <b>124.85 306.3</b>	UNICOM <b>122.8 (CTAF) 0</b>
------------------------	---------------------------------------	---------------------------------



ELEV	61	TDZE	59
------	----	------	----



CATEGORY	A	B	C	D
LPV DA	309-1		250 (300-1)	
LNAV/VNAV DA	408-1½		349 (400-1½)	
LNAV MDA	500-1	441 (500-1)	500-1¾	441 (500-1¾)
<b>C</b> CIRCLING	540-1	479 (500-1)	640-1½ 579 (600-1½)	640-2 579 (600-2)

SW-2, 05 NOV 2020 to 03 DEC 2020

SW-2, 05 NOV 2020 to 03 DEC 2020