

| | | | |
|--|------------------------|-----------------------------|---|
| WAAS CH 69239 W36A | APP CRS 358° | Rwy Idg TDZE Apt Elev | 4238 779 783 |
|--|------------------------|-----------------------------|---|

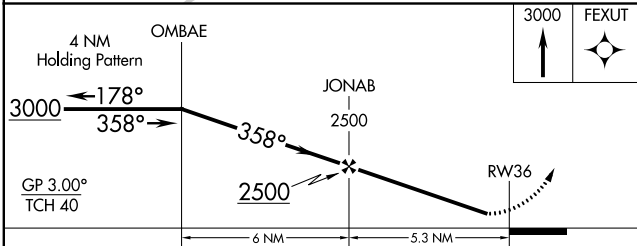
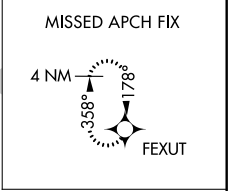
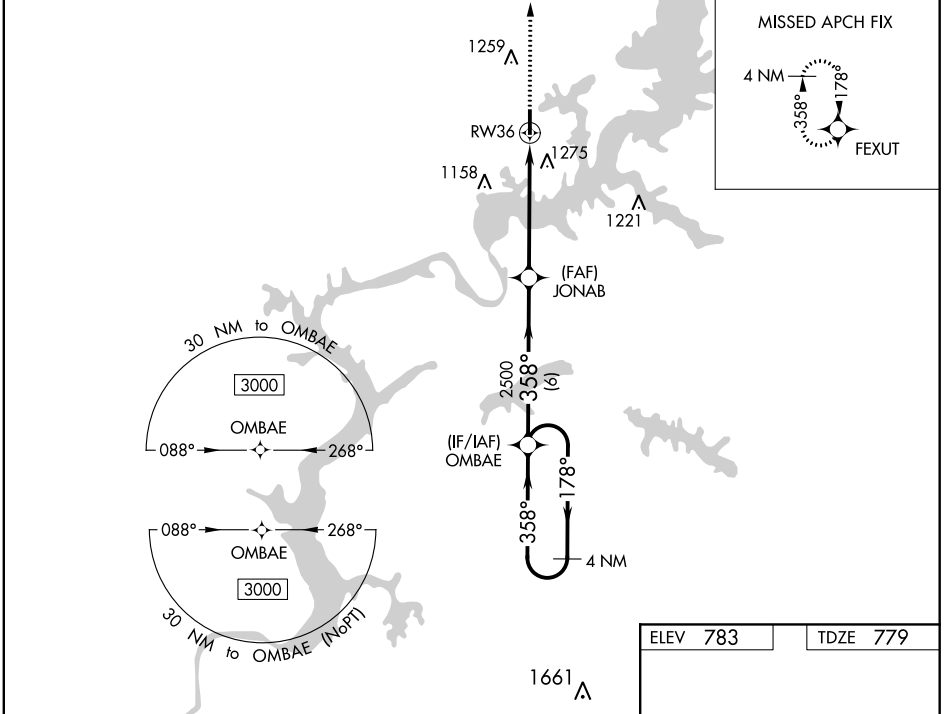
RNAV (GPS) RWY 36

SOUTH GRAND LAKE RGNL (1K8)

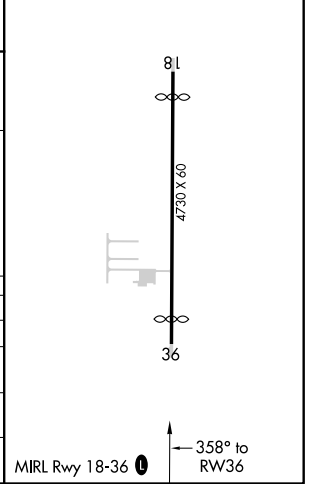
RNP APCH.
 Baro-VNAV NA. Rwy 36 helicopter visibility reduction below 3/4 SM NA.
 Circling Rwy 18 NA at night. Use Grove altimeter setting; when not received, use Claremore altimeter setting; increase LPV DA to 1099 feet and all visibilities 1/8 mile, LNAV/VNAV DA to 1666 feet and all visibilities 1 mile; increase all MDA 40 feet.

MISSED APPROACH: Climb to 3000 direct FEXUT and hold.

| | | |
|------------------------------|--|-----------------------|
| GMJ AWOS-3 119.025 | KANSAS CITY CENTER 128.6 282.325 | CTAF 122.90 |
|------------------------------|--|-----------------------|



| | |
|----------|----------|
| ELEV 783 | TDZE 779 |
|----------|----------|



| CATEGORY | A | B | C | D |
|--------------|-----------------------|-------------------------------|-------------------------------|----|
| LPV DA | 1068-1 | 289 (300-1) | | NA |
| LNAV/VNAV DA | 1635-3 | 856 (900-3) | | NA |
| LNAV MDA | 1540-1 761 (800-1) | 1540-1 1/4 761 (800-1 1/4) | 1540-2 1/2 761 (800-2 1/2) | NA |
| CIRCLING | 1540-1 757 (800-1) | 1620-1 1/4 837 (900-1 1/4) | 1620-2 1/2 837 (900-2 1/2) | NA |

SC-1, 08 OCT 2020 to 05 NOV 2020

SC-1, 08 OCT 2020 to 05 NOV 2020