

APP CRS 347°	Rwy Idg TDZE Apt Elev	N/A N/A 4693
------------------------	-----------------------------	---------------------------

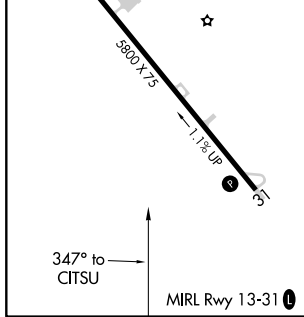
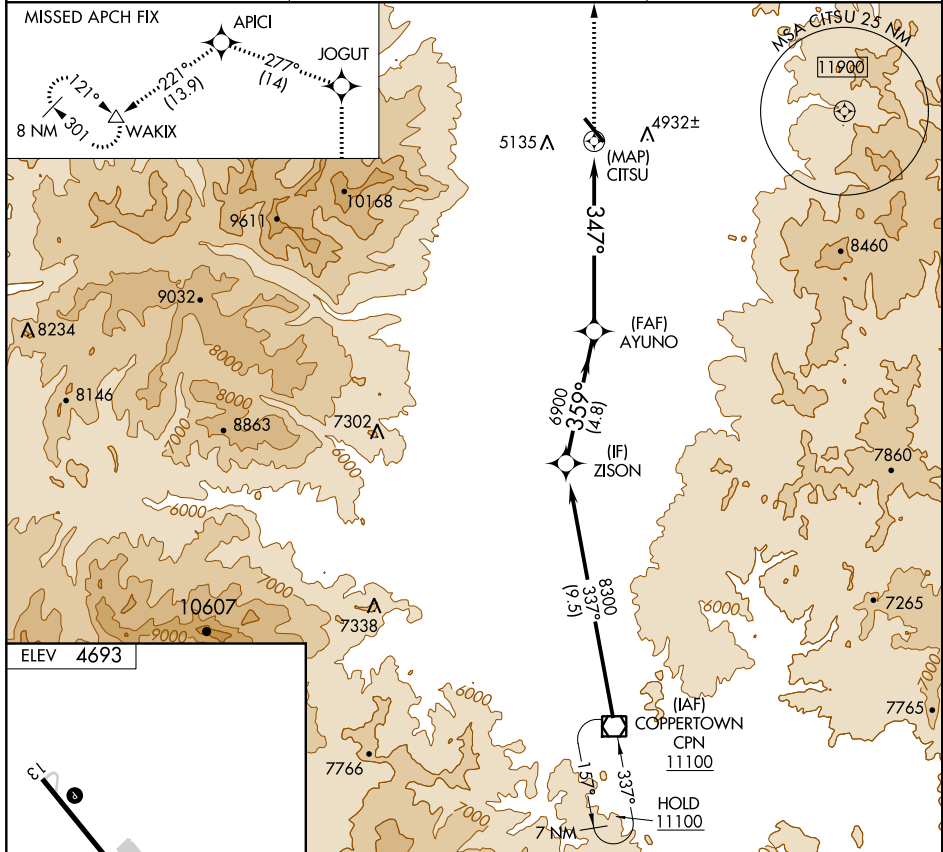
RNAV (GPS)-A

DEER LODGE-CITY-COUNTY (38S)

NA
Circling Rwy 13 NA at night. DME/DME RNP-0.3 NA. Rwy 13 helicopter visibility reduction below 1 SM NA. When local altimeter setting not received use Anaconda altimeter setting and increase all MDA 100 feet; increase Cat B visibility 1/4 SM.

MISSED APPROACH: Climb to 13000 direct JOGUT and on track 277° to APICI and on track 221° to WAKIX and hold, continue climb-in-hold to 13000.

AWOS-AV 120.025	SALT LAKE CENTER 133.4 285.4	CTAF 122.90
---------------------------	--	-----------------------



13000	JOGUT	tr 277°	APICI	tr 221°	WAKIX	ZISON
			AYUNO		8300	
			CITSU		6900	

CATEGORY	A	B	C	D
CIRCLING	5440-1 747 (800-1)	5460-1 767 (800-1)	5720-3 1027 (1100-3)	6300-3 1607 (1700-3)

NW-1, 08 OCT 2020 to 05 NOV 2020

NW-1, 08 OCT 2020 to 05 NOV 2020