

APP CRS 322°	Rwy Idg 5125
	TDZE 20
	Apt Elev 20

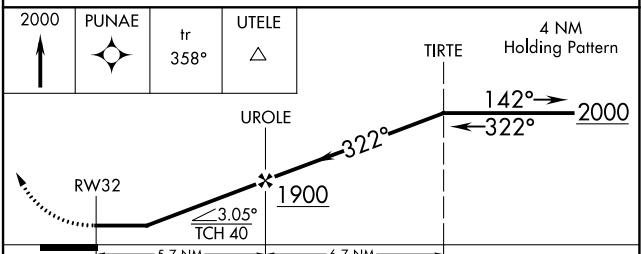
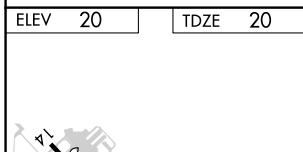
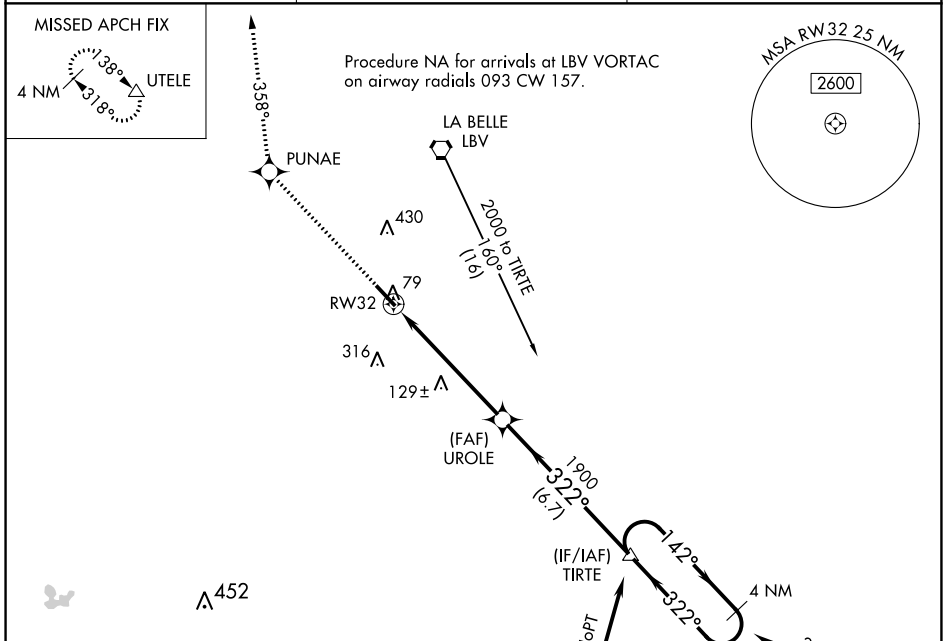
RNAV (GPS) RWY 32

LA BELLE MUNI (X14)

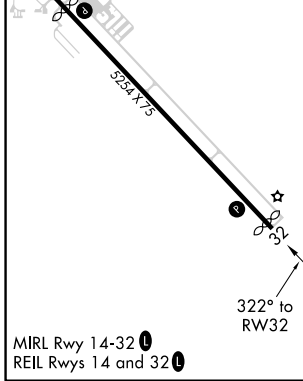
NA DME/DME RNP-0.3 NA. Helicopter visibility reduction below 3/4 SM NA. MISSED APPROACH: Climb to 2000 direct PUNAE then via 358° track to UTELE and hold.

Use Southwest Florida Intl altimeter setting; when not received, use Page Field altimeter setting and increase all MDAs 20 feet.

RSW ASOS 124.65	FORT MYERS APP CON 126.8	UNICOM 122.8 (CTAF) 0
---------------------------	------------------------------------	---------------------------------



CATEGORY	A	B	C	D
LNAV MDA	480-1	460 (500-1)	480-1 1/4 460 (500-1 1/4)	480-1 1/2 460 (500-1 1/2)
CIRCLING	580-1	560 (600-1)	580-1 1/2 560 (600-1 1/2)	800-2 1/2 780 (800-2 1/2)



SE-3, 08 OCT 2020 to 05 NOV 2020

SE-3, 08 OCT 2020 to 05 NOV 2020