

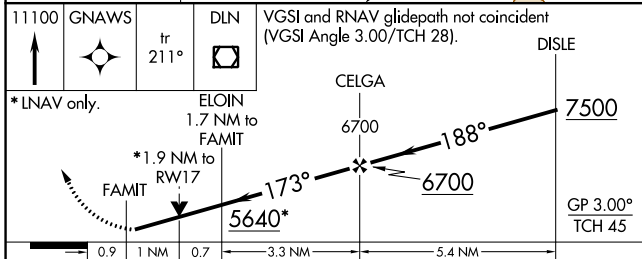
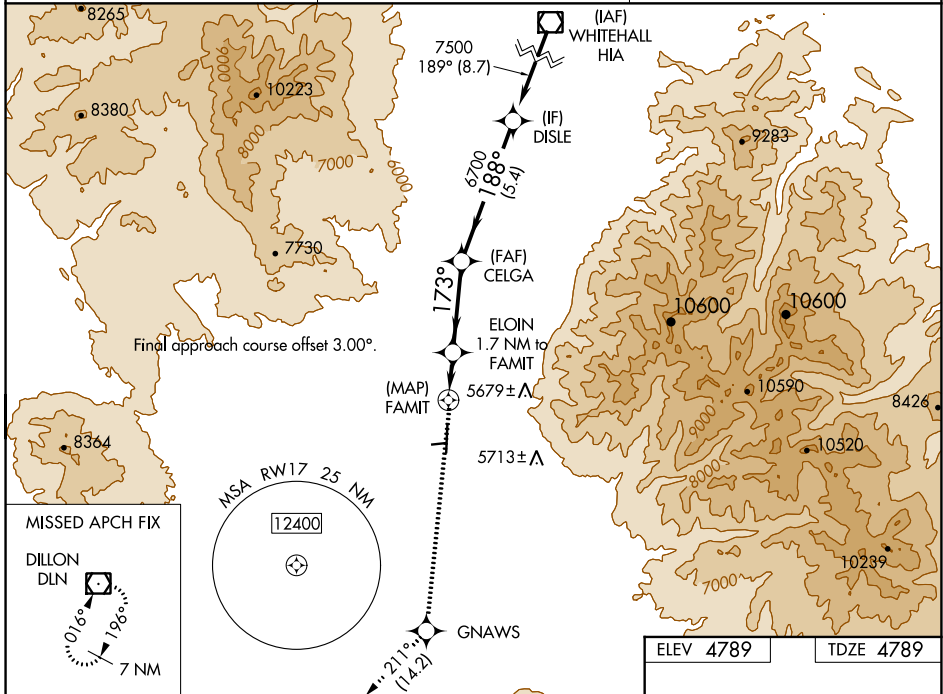
WAAS CH <b>93840</b> <b>W17A</b>	APP CRS <b>173°</b>	Rwy Idg TDZE Apt Elev	<b>6000</b> <b>4789</b> <b>4789</b>
--	------------------------	-----------------------------	---

# RNAV (GPS) RWY 17

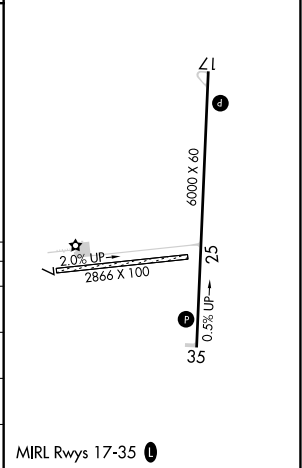
TWIN BRIDGES (7S1)

RNP APCH.	MISSED APPROACH: Climb to 11100 direct GNAWS and on track 211° to DLN VOR/DME and hold, continue climb-in-hold to 11100.
<p>⚠ Circling NA to Rwy 7 and 25. Circling NA east of Rwy 17-35.</p> <p>⚠ Rwy 17 helicopter visibility reduction below 3/4 SM NA. For uncompensated Baro-VNAV systems, LNAV/VNAV NA below -24°C or above 54°C.</p>	

AWOS-3PT <b>119.025</b>	SALT LAKE CENTER <b>132.4 338.3</b>	CTAF <b>122.90</b>
----------------------------	--	-----------------------



ELEV 4789	TDZE 4789
-----------	-----------



CATEGORY	A	B	C	D
LPV DA		5174-1¼	385 (400-1¼)	
LNAV/VNAV DA		5579-3	790 (800-3)	
LNAV MDA	5440-1	651 (700-1)	5440-1⅞	651 (700-1⅞)
CIRCLING	5440-1	651 (700-1)	5480-2 691 (700-2)	5620-2¾ 831 (900-2¾)

MIRL Rwy 17-35

NW-1, 08 OCT 2020 to 05 NOV 2020

NW-1, 08 OCT 2020 to 05 NOV 2020