

RNAV (GPS) RWY 2

NONDALTON (5NN) (PANO)

APP CRS	Rwy Idg	2800
020°	TDZE	314
	Apt Elev	314

RNP APCH.

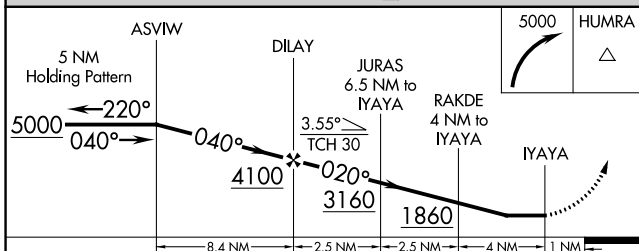
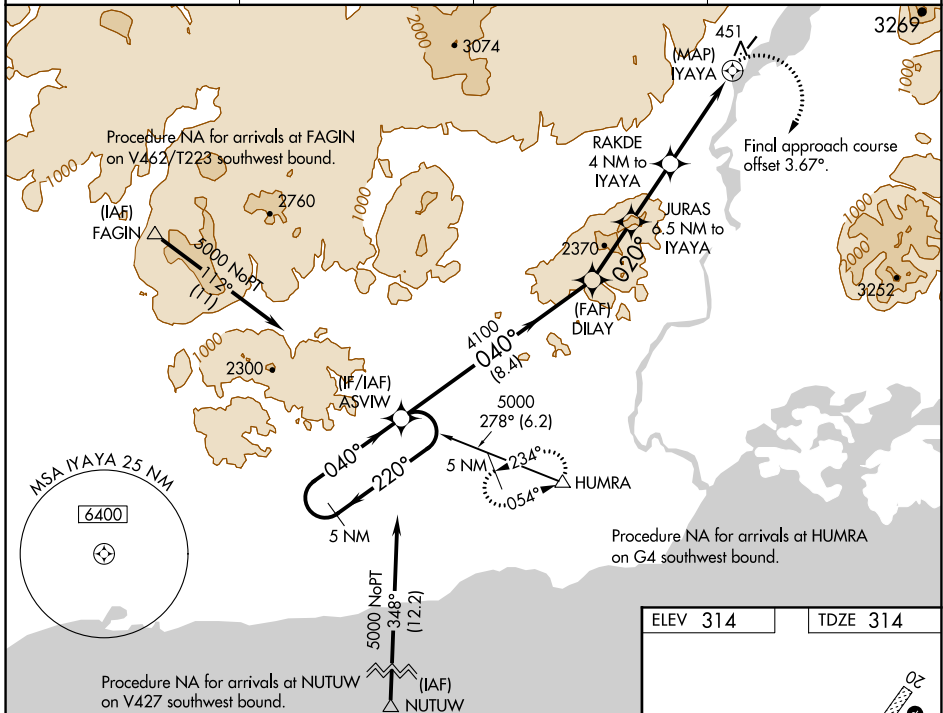
▼ When Iliamna altimeter setting not received, procedure NA.

▲ NA Circling NA west of Rwy 2-20. Rwy 2 helicopter visibility reduction below 1 SM NA. Straight-In Rwy 2 NA at night, Circling Rwy 2 NA at night.

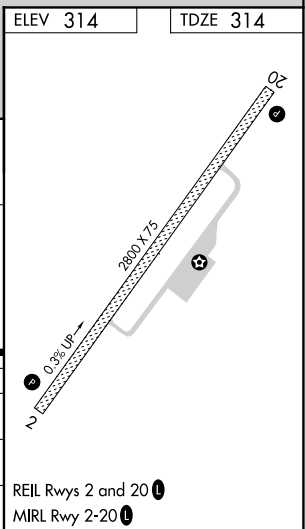
⊖ -1.4°C

MISSED APPROACH: Climbing right turn to 5000 direct HUMRA and hold, continue climb-in-hold to 5000.
 *Missed approach requires minimum climb of 265 feet per NM to 2500.

ILI/PAIL ASOS	ANCHORAGE CENTER	KENAI RADIO	CTAF
134.95	118.8	122.2	122.9



CATEGORY	A	B	C	D
LNAV MDA	1660-1¼ 1346 (1400-1¼)	1660-1½ 1346 (1400-1½)		NA
LNAV MDA*	1380-1¼ 1066 (1100-1¼)	1380-1½ 1066 (1100-1½)		NA
C CIRCLING	1660-1¼ 1346 (1400-1¼)	1660-1½ 1346 (1400-1½)		NA



AK, 10 SEP 2020 to 05 NOV 2020

AK, 10 SEP 2020 to 05 NOV 2020