

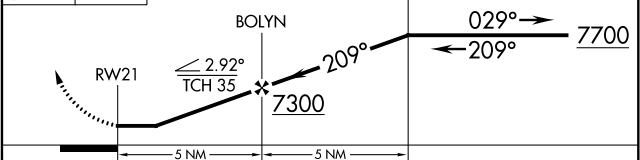
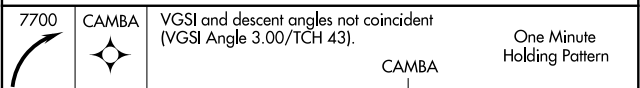
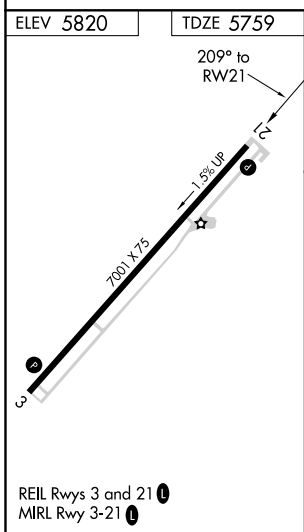
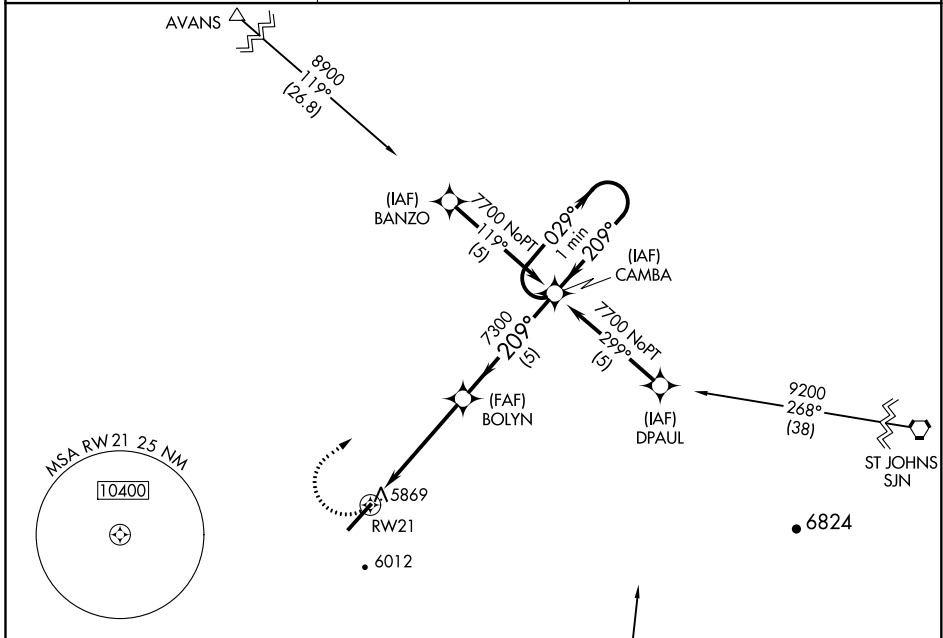
APP CRS <b>209°</b>	Rwy Idg <b>7001</b>
	TDZE <b>5759</b>
	Apt Elev <b>5820</b>

# GPS RWY 21

TAYLOR (TYL)

<p><b>▽</b></p> <p><b>▲ NA</b></p>	<p>MISSED APPROACH: Climbing right turn to 7700 direct CAMBA WP and hold.</p>
------------------------------------	---

<p>AWOS-3PT <b>119.075</b></p>	<p>ALBUQUERQUE CENTER <b>132.9 239.05</b></p>	<p>UNICOM <b>122.7 (CTAF) 0</b></p>
------------------------------------	---	---



CATEGORY	A	B	C	D
S-21	6120-1 361 (300-1)			6120-1¼ 361 (300-1¼)
CIRCLING	6320-1 500 (500-1)	6380-1 560 (600-1)	6380-1½ 560 (600-1½)	6480-2 660 (700-2)

SW-4, 08 OCT 2020 to 05 NOV 2020

SW-4, 08 OCT 2020 to 05 NOV 2020