

WAAS CH 53636 W04A	APP CRS 038°	Rwy Idg TDZE Apt Elev	3700 352 354
--	------------------------	-----------------------------	---

RNAV (GPS) RWY 4

WASILLA (IYS) (PAWS)

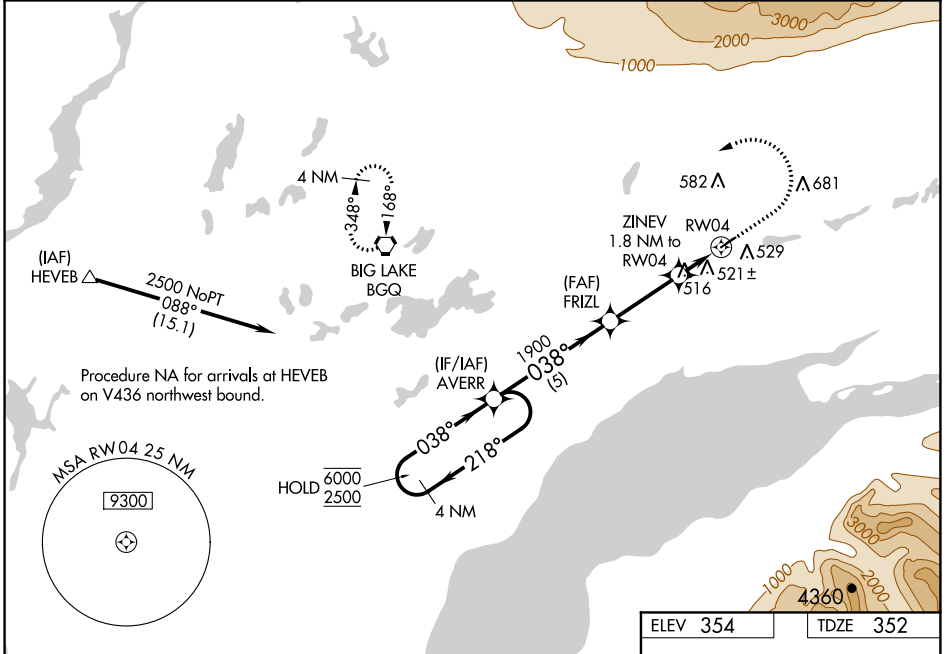
RNP APCH.

⚠ Circling NA to Rwy 4S and 22S. Baro-VNAV and VDP NA when using Palmer altimeter setting. For uncompensated Baro-VNAV systems, LNAV/VNAV NA below -20°C or above 54°C. When local altimeter setting not received, use Palmer altimeter setting and increase all DA 46 feet, all MDA 60 feet and all visibilities ¼ mile.

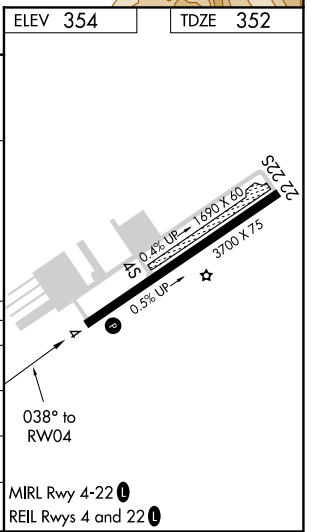
⚠ MISSED APPROACH: Climb to 1000 then climbing left turn to 3000 direct BQG VORTAC and hold.

❄ -31°C

AWOS-3P 135.25	ANCHORAGE APP CON 119.1 363.2	CTAF 122.8
--------------------------	---	----------------------



4 NM Holding Pattern		VGSI and RNAV glidepath not coincident (VGSI Angle 3.00/TCH 25).		1000	3000	BQG
6000 ← 218°		FRIZL 1900		*INAV only.		
2500 → 038°		ZINEV 1.8 NM to RWY 4		*1.3 NM to RWY 4		
GP 3.00° TCH 45		*960		RWY 4		
5 NM		3 NM		0.5 NM		1.3 NM
CATEGORY	A	B	C	D		
LPV DA	602-3/4	250 (300-3/4)	NA			
LNAV/VNAV DA	828-1 5/8	476 (500-1 1/8)	NA			
LNAV MDA	780-1	428 (500-1)	NA			
C CIRCLING	1000-1 646 (700-1)		NA			



AK, 10 SEP 2020 to 05 NOV 2020

AK, 10 SEP 2020 to 05 NOV 2020