

APP CRS	Rwy Idg	2697
140°	TDZE	762
	Apt Elev	773

RNAV (GPS) RWY 14

EPHRAIM-GIBALTAR (3D2)

RNP APCH:

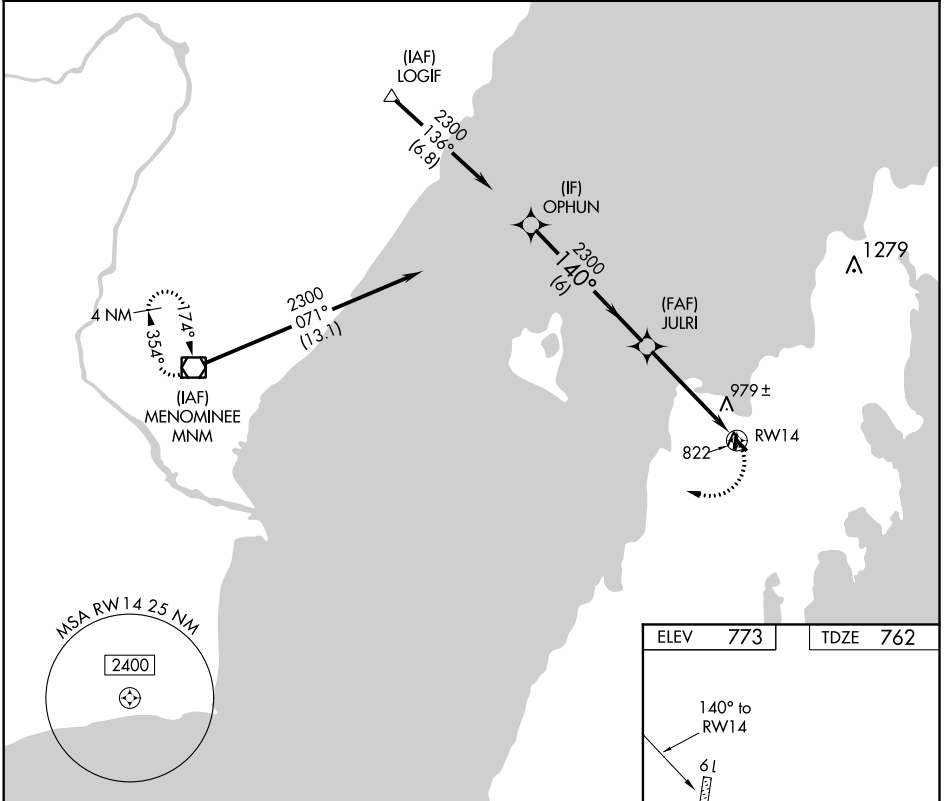
- Rwy 14 helicopter visibility reduction below 3/4 SM NA. Use Door County Cherryland altimeter setting; when not received, use Menominee altimeter setting and increase all MDA 20 feet.
- NA

MISSED APPROACH: Climbing right turn to 3000 direct MNM VOR/DME and hold.

AWOS-3PT
124.175

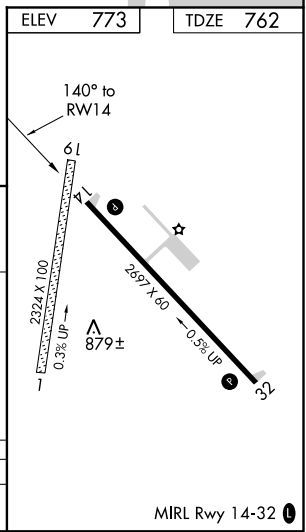
GREEN BAY APP CON*
120.3 338.2

UNICOM
123.0 (CTAF)



EC-3, 08 OCT 2020 to 05 NOV 2020

EC-3, 08 OCT 2020 to 05 NOV 2020



Visual Segment - Obstacles.				3000	
Procedure	Turn				
NA	OPHUN	JULRI			
2300	140°	2300	RWY 14		
6 NM		4.6 NM			
CATEGORY	A	B	C	D	
LNAV MDA	1300-1	538 (600-1)	1300-1½ 538 (600-1½)	NA	