

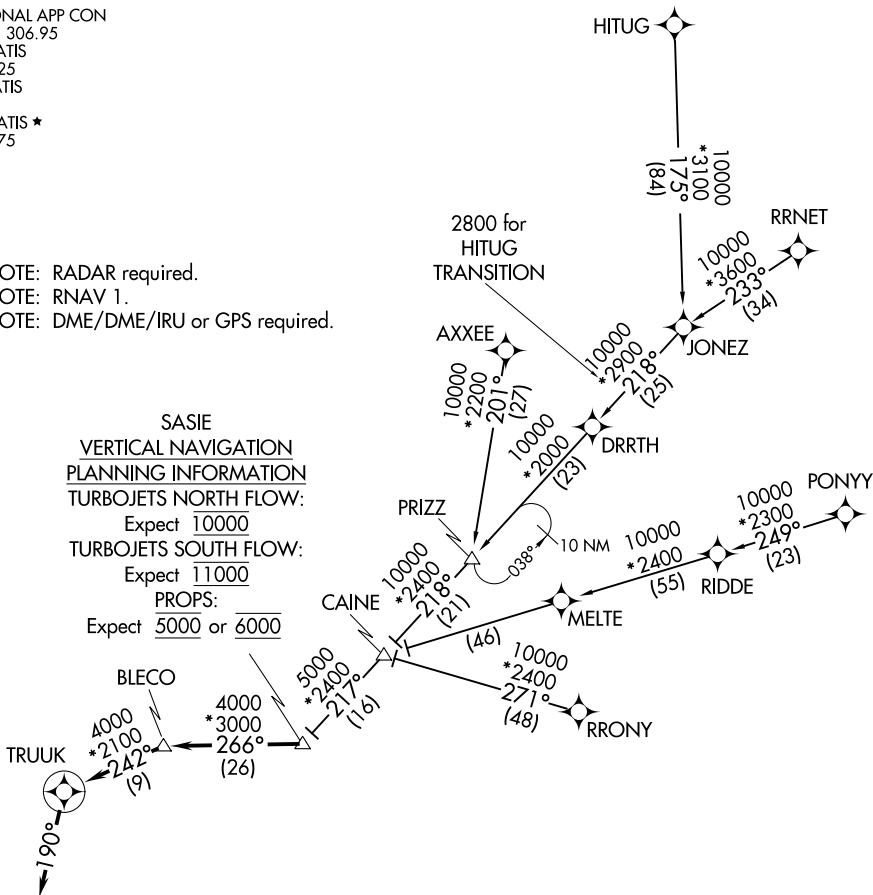
TRUK TWO ARRIVAL (RNAV)

DALLAS-FORT WORTH, TEXAS

REGIONAL APP CON
 118.1 306.95
 AFW ATIS
 126.925
 FTW ATIS
 120.7
 NFW ATIS ★
 351.675

NOTE: RADAR required.
 NOTE: RNAV 1.
 NOTE: DME/DME/IRU or GPS required.

SASIE
 VERTICAL NAVIGATION
 PLANNING INFORMATION
 TURBOJETS NORTH FLOW:
 Expect 10000
 TURBOJETS SOUTH FLOW:
 Expect 11000
 PROPS:
 Expect 5000 or 6000



ARRIVAL ROUTE DESCRIPTION

AXEE TRANSITION (AXEE.TRUK2): (For aircraft filing FL230 and below).

HITUG TRANSITION (HITUG.TRUK2)

PONY TRANSITION (PONY.TRUK2)

RRNET TRANSITION (RRNET.TRUK2)

RRONY TRANSITION (RRONY.TRUK2): (For aircraft filing FL230 and below).

From SASIE on track 266° to BLECO, then on track 242° to TRUK, then on track 190°. Expect RADAR vectors to final approach course.

NOTE: Chart not to scale.

TRUK TWO ARRIVAL (RNAV)

DALLAS-FORT WORTH, TEXAS

