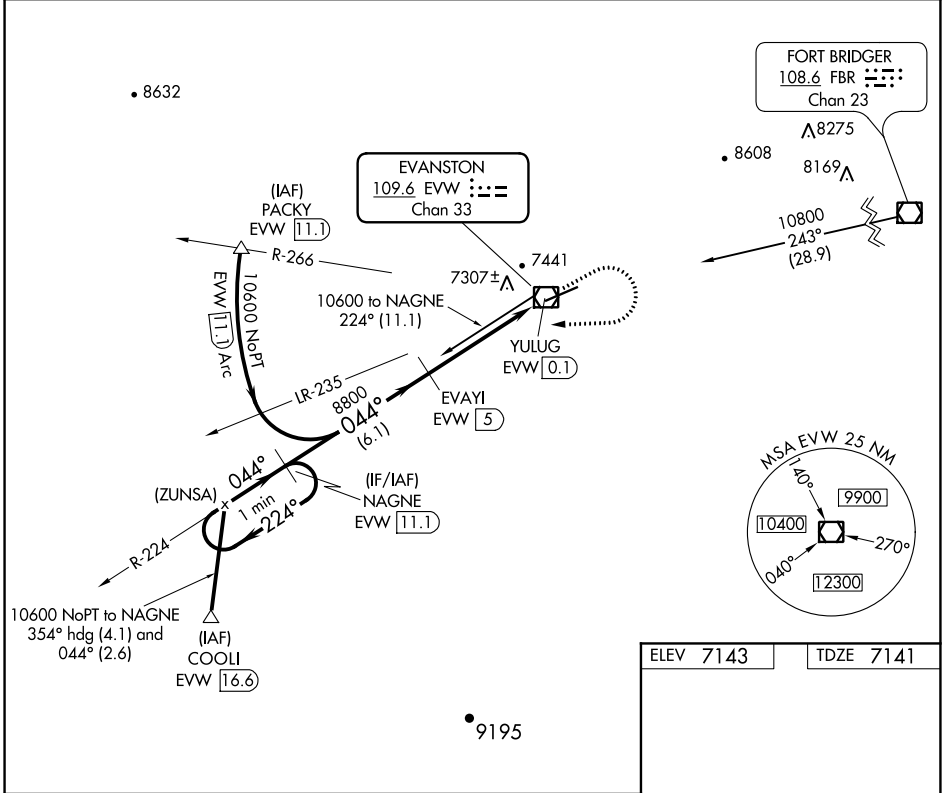


VOR/DME EVW 109.6 Chan 33	APP CRS 044°	Rwy Ldg TDZE 7300 7141 Apt Elev 7143
--	------------------------	---

VOR/DME RWY 5

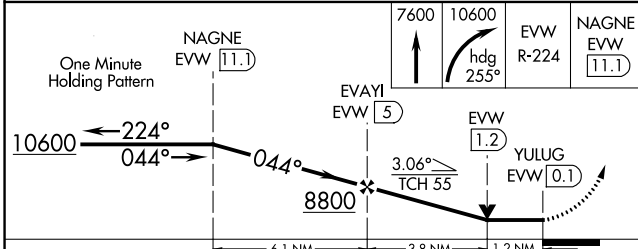
EVANSTON-UINTA COUNTY BURNS FIELD (E V W)

<p>▽ If local altimeter setting not received, procedure NA.</p>		<p>MISSED APPROACH: Climb to 7600, then climbing right turn to 10600 via heading 255° and EVW VOR/DME R-224 to NAGNE/11.1 DME and hold, continue climb-in-hold to 10600.</p>	
ASOS 120.0	SALT LAKE CENTER 127.7 354.125	GCO 121.72	UNICOM 123.0 (CTAF) 📻



NW-1, 08 OCT 2020 to 05 NOV 2020

NW-1, 08 OCT 2020 to 05 NOV 2020



ELEV 7143	TDZE 7141
-----------	-----------

REIL Rwy 5 **📻**
HIRL Rwy 5-23 **📻**

CATEGORY	A	B	C	D
S-5	7560-1	419 (500-1)	7560-1 ¼	419 (500-1 ¼)
CIRCLING	7580-1 437 (500-1)	7720-1 577 (600-1)	7760-1 ¾ 617 (700-1 ¾)	7760-2 617 (700-2)