

WAAS CH <b>82135</b> <b>W34A</b>	APP CRS <b>344°</b>	Rwy Idg TDZE Apt Elev	<b>4500</b> <b>29</b> <b>29</b>
--	------------------------	-----------------------------	---------------------------------------

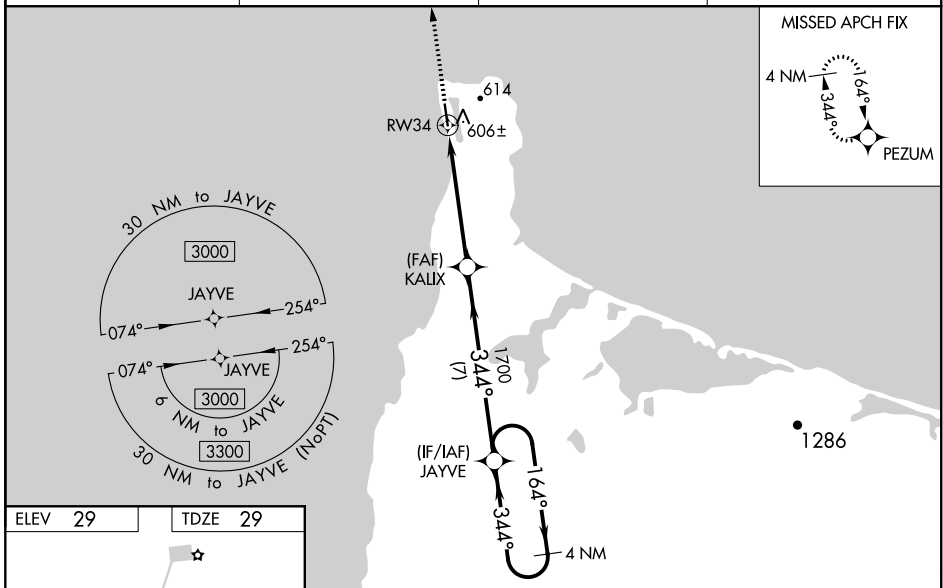
# RNAV (GPS) RWY 34

GAMBELL (GAM)(PAGM)

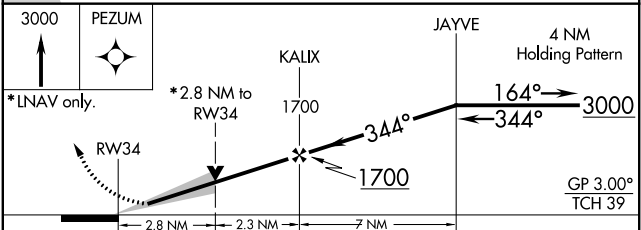
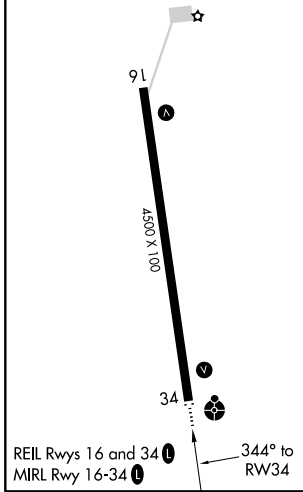
Baro-VNAV and VDP NA when using Savoonga altimeter setting. For uncompensated Baro-VNAV systems, LNAV/VNAV NA below -20°C (-4°F) or above 54°C (130°F). Circling NA NE of Rwy 16-34. DME/DME RNP-0,3 NA. When local altimeter setting not received, use Savoonga altimeter setting and increase all DA 82 feet, increase LPV all Cats visibility ¼ mile, and LNAV/VNAV all Cats visibility by 1 mile; increase all MDA 100 feet and LNAV visibility Cat B ¼ mile, Cat C and D ½ mile; increase Circling Cats B and C ¼ mile. For inop ODALS when using Savoonga altimeter setting increase LPV all Cats visibility ½ mile. For inop ODALS increase LPV all Cats visibility ½ mile. Inop table does not apply to LNAV/VNAV all Cats, and LNAV Cats C and D. When using Savoonga altimeter setting inop table does not apply to LNAV/VNAV all Cats, and LNAV Cats C and D.

ODALS  
MISSED APPROACH:  
Climb to 3000  
direct PEZUM  
and hold.

AWOS-3P <b>125.9</b>	ANCHORAGE CENTER <b>132.2 281.4</b>	NOME RADIO <b>122.0</b>	CTAF <b>122.7</b>
-------------------------	--	----------------------------	----------------------



ELEV 29	TDZE 29
---------	---------



CATEGORY	A	B	C	D
LPV DA		279-¾	250 (300-¾)	
LNAV/VNAV DA		866-3	837 (900-3)	
LNAV MDA	960-1	931 (1000-1)	960-2½	931 (1000-2½)
CIRCLING	960-1¼	931 (1000-1¼)	960-2¾	931 (1000-3)

AK, 10 SEP 2020 to 05 NOV 2020

AK, 10 SEP 2020 to 05 NOV 2020