

NDB/DME GAM <b>369</b>	APP CRS <b>345°</b>	Rwy Idg <b>4500</b> TDZE <b>26</b> Apt Elev <b>27</b>
Chan <b>92 (114.5)</b>		

# NDB/DME RWY 34

GAMBELL(GAM)(PAGM)

	Circling NA northeast of Rwy 16-34.		MISSED APPROACH: Climb to 3000 direct GAM NDB/DME and in GAM NDB/DME holding pattern.

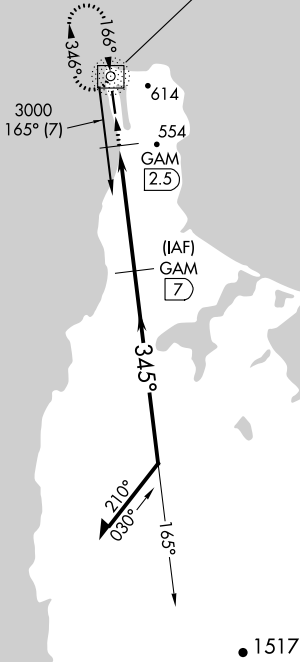
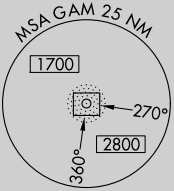
AWOS-3P <b>125.9</b>	ANCHORAGE CENTER <b>132.2 281.4</b>	NOME RADIO <b>122.0</b>	CTAF <b>122.7</b>
-------------------------	----------------------------------------	----------------------------	----------------------

CAUTION: GAM aural ident should be monitored to ensure against possible reception of foreign stations.

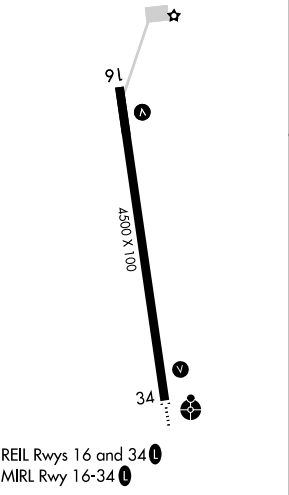
GAMBELL  
369 GAM   
DME Chan 92 (114.5)

3700  
270°  
(34.2)

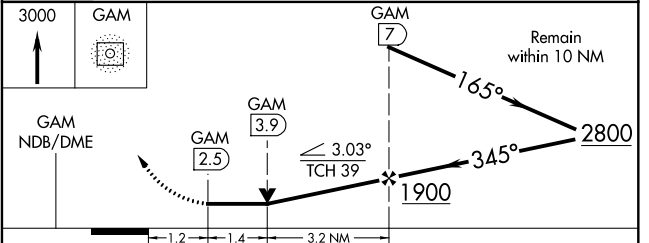
KUKULIAK  
117.3 ULL   
Chan 120



ELEV 27	TDZE 26
---------	---------



REIL Rwy 16 and 34   
MIRL Rwy 16-34



CATEGORY	A	B	C	D
S-34	880-1½ 854 (900-1½)	880-2½ 854 (900-2½)	880-2¾ 854 (900-2¾)	880-2¾ 854 (900-2¾)
CIRCLING	880-1½ 853 (900-1½)	880-2½ 853 (900-2½)	880-2¾ 853 (900-2¾)	880-2¾ 853 (900-2¾)

AK, 10 SEP 2020 to 05 NOV 2020

AK, 10 SEP 2020 to 05 NOV 2020