

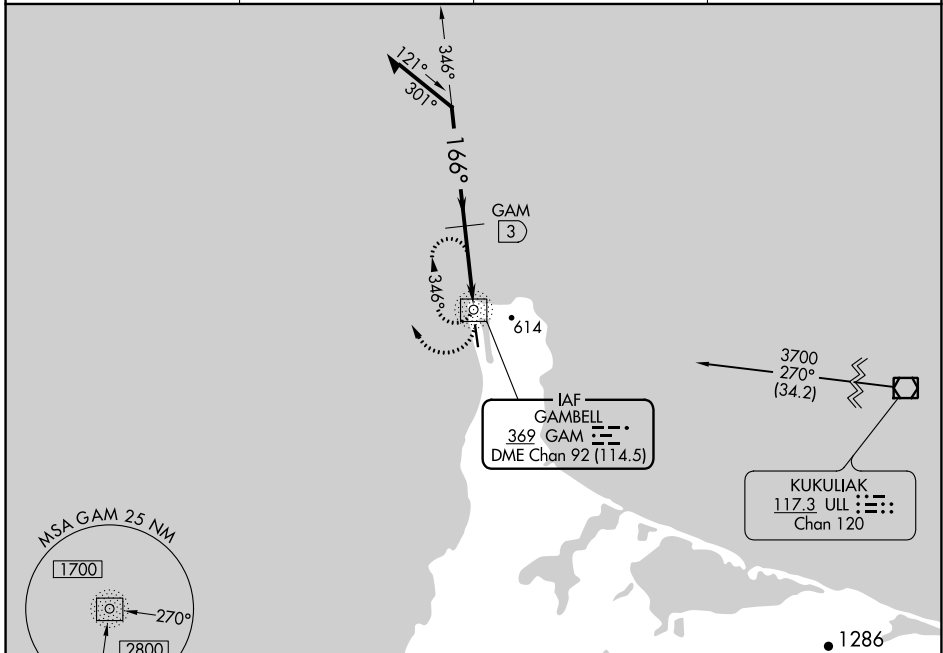
NDB/DME GAM <b>369</b> Chan <b>92 (114.5)</b>	APP CRS <b>166°</b>	Rwy Idg <b>4500</b> TDZE <b>27</b> Apt Elev <b>27</b>
---	------------------------	---

# NDB RWY 16

GAMBELL (GAM)(PAGM)

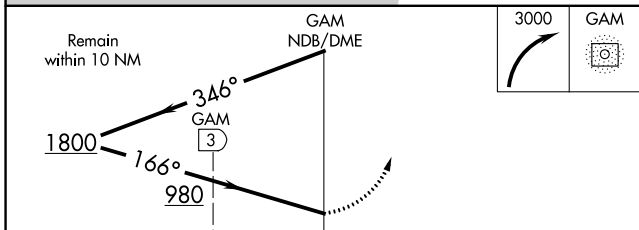
<p>Circling NA northeast of Rwy 16-34.</p>	<p>MISSED APPROACH: Climbing right turn to 3000 in GAM NDB/DME holding pattern.</p>
--	---

AWOS-3P <b>125.9</b>	ANCHORAGE CENTER <b>132.2 281.4</b>	NOME RADIO <b>122.0</b>	CTAF <b>122.7 0</b>
-------------------------	--	----------------------------	------------------------

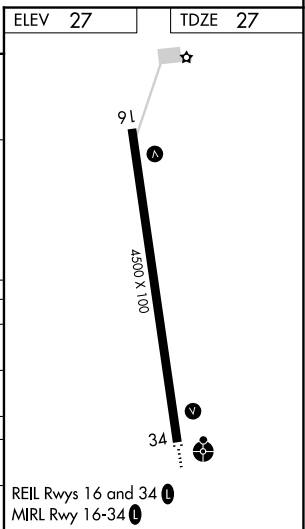


CAUTION: GAM aural ident should be monitored to ensure against possible reception of foreign stations.

ELEV <b>27</b>	TDZE <b>27</b>
----------------	----------------



CATEGORY	A	B	C	D
S-16	980-1¼ 953 (1000-1¼)	980-1½ 953 (1000-1½)	980-3	953 (1000-3)
CIRCLING	980-1¼ 953 (1000-1¼)	980-1½ 953 (1000-1½)	980-3	953 (1000-3)
DME MINIMUMS				
S-16	920-1¼ 893 (900-1¼)	920-2¾ 893 (900-2¾)	920-3 893 (900-3)	920-3 893 (900-3)
CIRCLING	920-1¼ 893 (900-1¼)	920-2¾ 893 (900-2¾)	920-3 893 (900-3)	920-3 893 (900-3)



REIL Rwy 16 and 34  
MIRL Rwy 16-34

AK, 10 SEP 2020 to 05 NOV 2020

AK, 10 SEP 2020 to 05 NOV 2020