

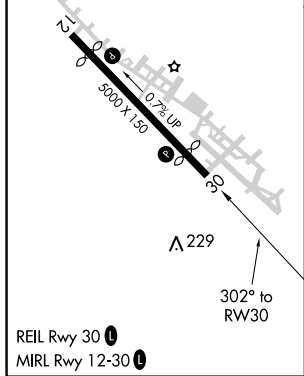
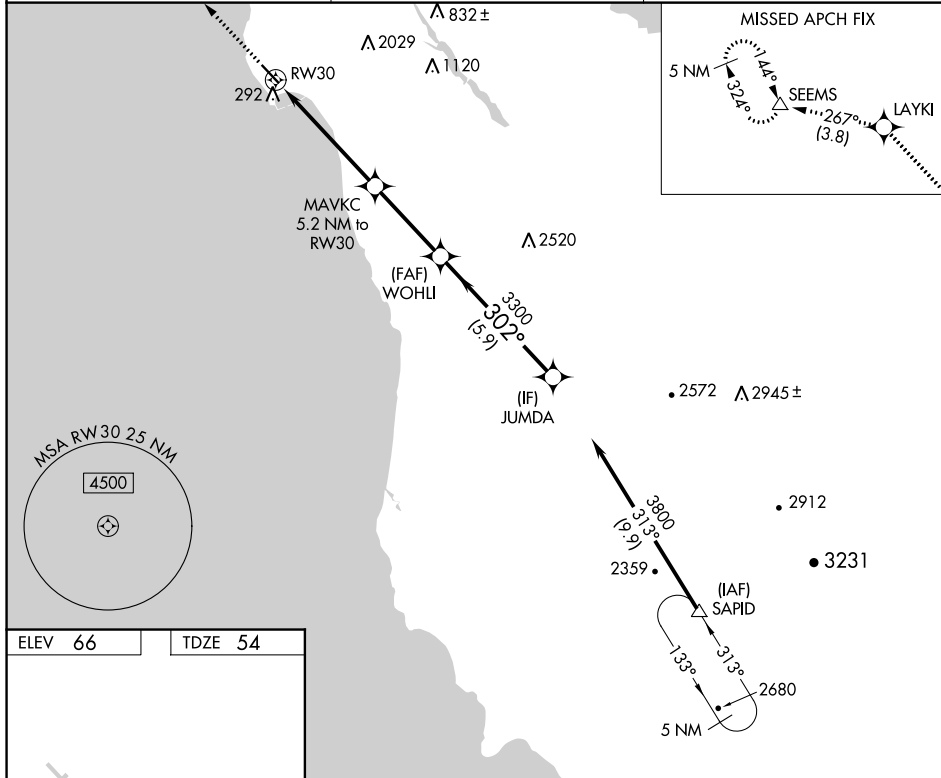
WAAS CH <b>50302</b> <b>W30A</b>	APP CRS <b>302°</b>	Rwy Idg TDZE Apt Elev	<b>4238</b> <b>54</b> <b>66</b>
--	------------------------	-----------------------------	---------------------------------------

# RNAV (GPS) RWY 30

HALF MOON BAY (HAF)

RNP APCH. ▽	MISSED APPROACH: Climb to 4000 direct LAYKI and on track 267° to SEEMS and hold, continue climb-in-hold to 4000.
----------------	--

AWOS-3 <b>127.275</b>	NORCAL APP CON <b>135.1 307.2</b>	UNICOM <b>122.8 (CTAF)</b> ①
--------------------------	--------------------------------------	---------------------------------



4000	LAYKI	tr 267°	SEEMS	VGSi and RNAV glidepath not coincident (VGSi Angle 3.00/TCH 24).			
*LNAV only		MAVKC 5.2 NM to RW30		WOHLI	JUMDA		
*1.8 NM to RW30		3300		3800	302°		
RW30		2020*		3300	3300		
1.8 NM		3.4 NM		3.4 NM		5.9 NM	
CATEGORY	A	B	C	D	GP 3.50° TCH 40		
LPV DA	381-1 327 (400-1)						
LNAV MDA	620-1 566 (600-1)			620-1½ 566 (600-1½)			

SW-2, 08 OCT 2020 to 05 NOV 2020

SW-2, 08 OCT 2020 to 05 NOV 2020