

APP CRS	Rwy Idg	5001
088°	TDZE	1389
	Apt Elev	1395

RNAV (GPS) RWY 9

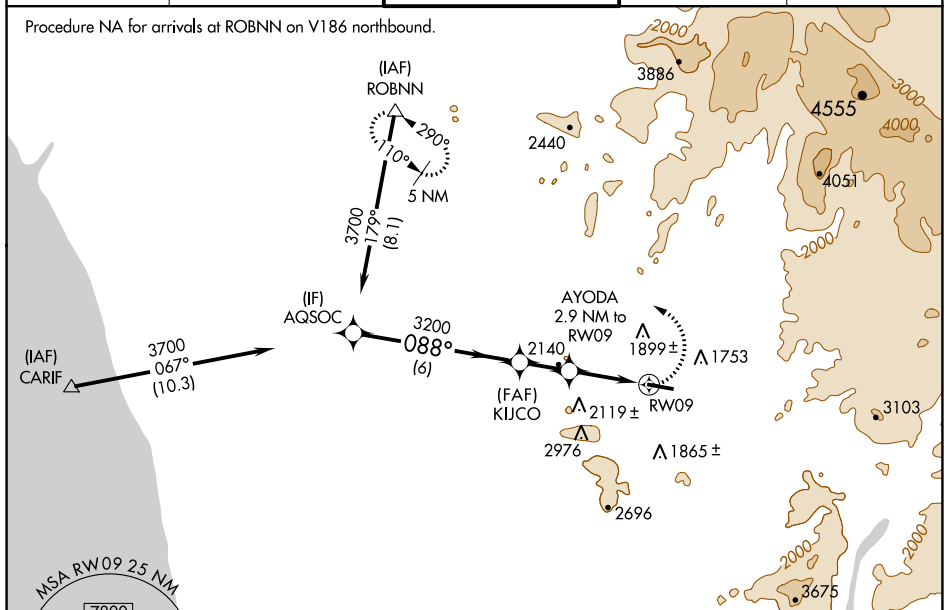
RAMONA (RNM)

⚠ Circling NA north of Rwy 9-27. DME/DME RNP -0.3 NA. LNAV minima NA when using Gillespie Field altimeter setting. When local altimeter setting not received, use Gillespie Field altimeter setting and increase all Circling MDA 180 feet and increase Circling visibility Cats A and B ¼ mile and Cat C ½ mile. Helicopter visibility reduction below ¾ SM NA.

MISSED APPROACH: Climbing left turn to 5000 direct ROBNN and hold.

ATIS 132.025	SOCAL APP CON 132.2 269.1	RAMONA TOWER ★ 119.875 (CTAF) 0	GND CON 121.65	UNICOM 122.95
------------------------	-------------------------------------	--	--------------------------	-------------------------

Procedure NA for arrivals at ROBNN on V186 northbound.

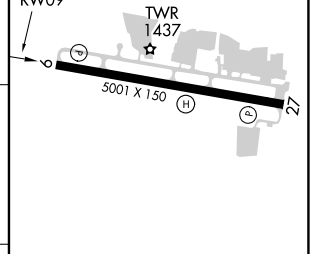
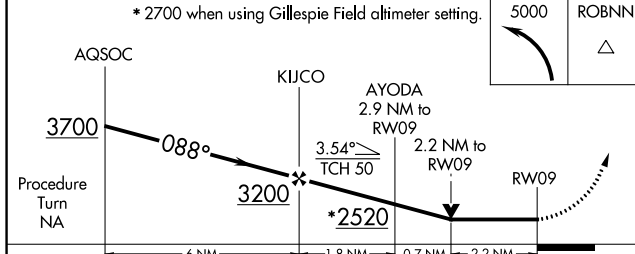


SW-3, 08 OCT 2020 to 05 NOV 2020

SW-3, 08 OCT 2020 to 05 NOV 2020

ELEV 1395	TDZE 1389
-----------	-----------

* 2700 when using Gillespie Field altimeter setting.



CATEGORY	A	B	C	D
LNAV MDA	2240-1 851 (900-1)	2240-1¼ 851 (900-1¼)	2240-2½ 851 (900-2½)	NA
CIRCLING	2240-1 845 (900-1)	2240-1¼ 845 (900-1¼)	2240-2½ 845 (900-2½)	NA

REIL Rwy 27 0
MIRL Rwy 9-27 0