

WYLSN SEVEN DEPARTURE (RNAV)

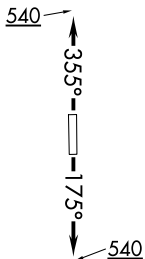
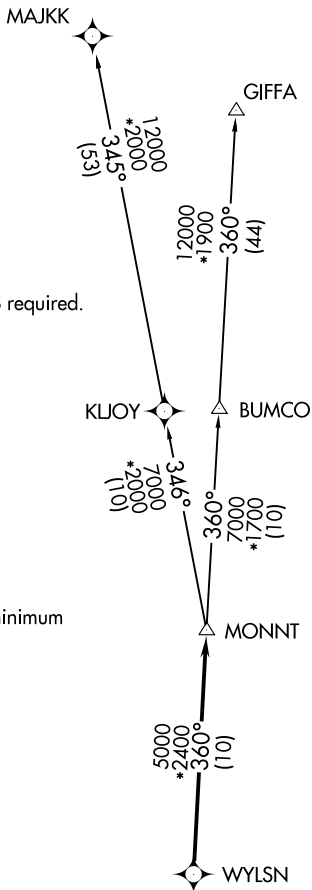
ASOS
 119.925
 CLNC DEL
 125.2
 CTAF
 123.0
 HOUSTON DEP CON
 134.45 284.0

**TOP ALTITUDE:
 ASSIGNED BY ATC**

NOTE: RADAR required.
 NOTE: DME/DME/IRU or GPS required.
 NOTE: RNAV 1.

TAKEOFF MINIMUMS

Rwy 17, 35: Standard with minimum climb of 500' per NM to 540.



DEPARTURE ROUTE DESCRIPTION

TAKEOFF RWY 17: Climb on heading 175° to 540 for RADAR vectors to WYLSN, thence. . . .

TAKEOFF RWY 35: Climb on heading 355° to 540 for RADAR vectors to WYLSN, thence. . . .

. . . .on track 360° to MONNT, then on (transition). Maintain ATC assigned altitude. Expect filed altitude 10 minutes after departure.

GIFFA TRANSITION (WYLSN7.GIFFA)
MAJJK TRANSITION (WYLSN7.MAJKK)

NOTE: Chart not to scale.

SC-5, 08 OCT 2020 to 05 NOV 2020

SC-5, 08 OCT 2020 to 05 NOV 2020