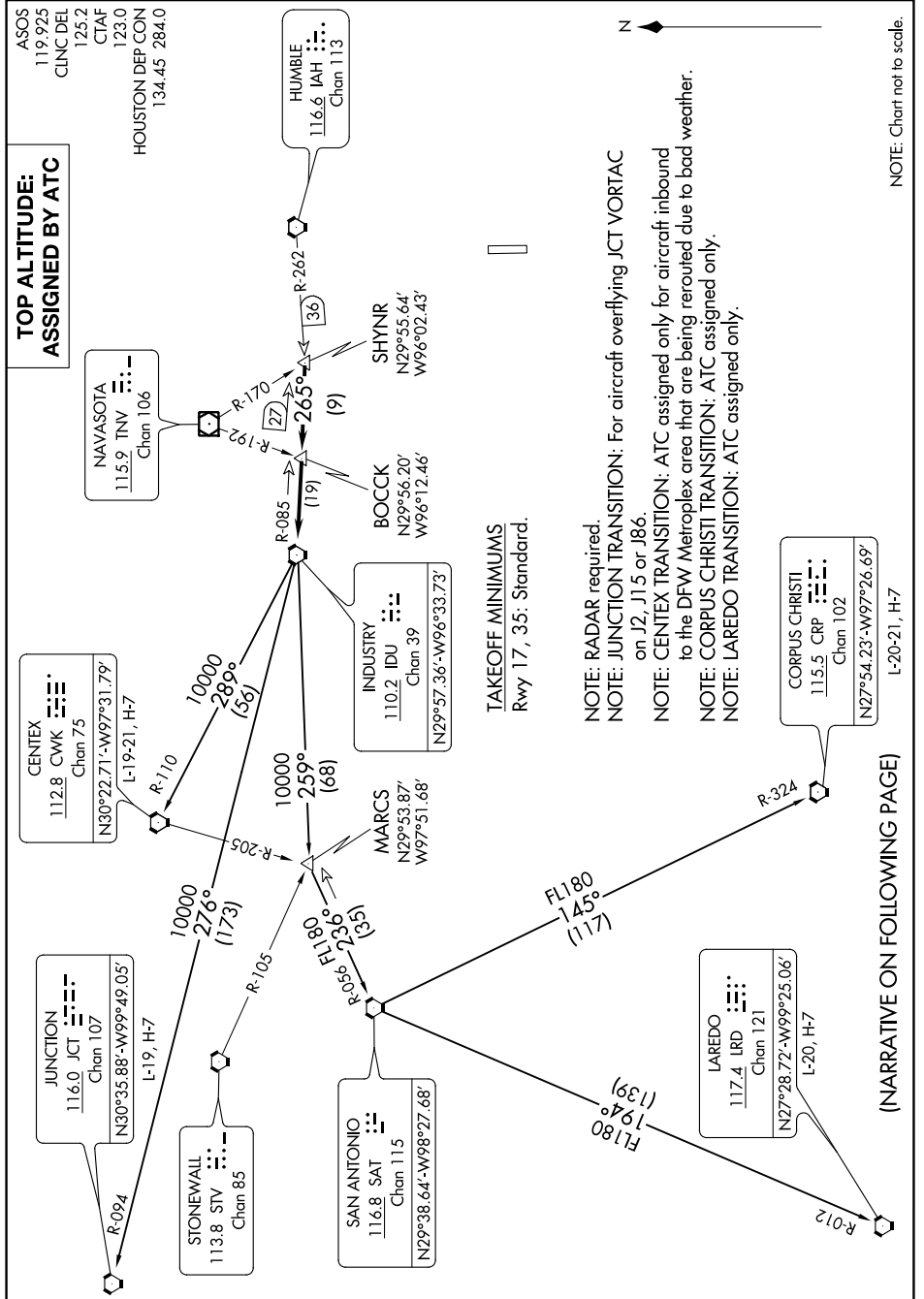


# INDUSTRY NINE DEPARTURE

AL-6453 (FAA)

TEXAS GULF COAST RGNL (L.B.X)  
ANGLETON/LAKE JACKSON, TEXAS

SC-5, 08 OCT 2020 to 05 NOV 2020



**TOP ALTITUDE:  
ASSIGNED BY ATC**

ASOS  
119.925  
CLNC DEL  
125.2  
CTAF  
123.0  
HOUSTON DEP CON  
134.45 284.0

CENTEX  
112.8 CWK  
Chan 75  
N30°22.71'-W97°31.79'  
L-19-21, H-7

JUNCTION  
116.0 JCT  
Chan 107  
N30°35.88'-W99°49.05'  
L-19, H-7

STONEWALL  
113.8 STW  
Chan 85  
N30°35.88'-W99°49.05'  
L-19, H-7

SAN ANTONIO  
116.8 SAT  
Chan 115  
N29°38.64'-W98°27.68'

MARCUS  
N29°53.87'  
W97°51.68'

INDUSTRY  
110.2 IDU  
Chan 39  
N29°57.36'-W96°33.73'

BOCCK  
N29°56.20'  
W96°12.46'

SHYNR  
N29°55.64'  
W96°02.43'

HUMBLE  
116.6 IAH  
Chan 113

**TAKEOFF MINIMUMS**  
Rwy 17, 35: Standard.

**NOTE: RADAR required.**  
**NOTE: JUNCTION TRANSITION:** For aircraft overflying JCT VORTAC on J2, J15 or J86.  
**NOTE: CENTEX TRANSITION:** ATC assigned only for aircraft inbound to the DFW Metroplex area that are being rerouted due to bad weather.  
**NOTE: CORPUS CHRISTI TRANSITION:** ATC assigned only.  
**NOTE: LAREDO TRANSITION:** ATC assigned only.

(NARRATIVE ON FOLLOWING PAGE)

NOTE: Chart not to scale.

# INDUSTRY NINE DEPARTURE

ANGLETON/LAKE JACKSON, TEXAS  
TEXAS GULF COAST RGNL (L.B.X)

SC-5, 08 OCT 2020 to 05 NOV 2020