

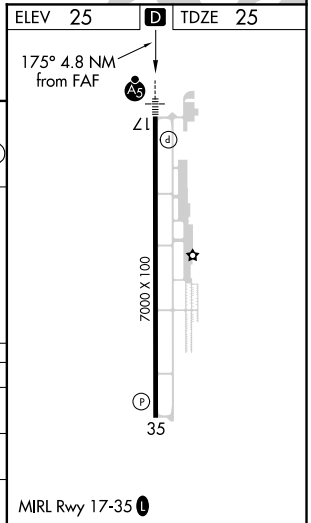
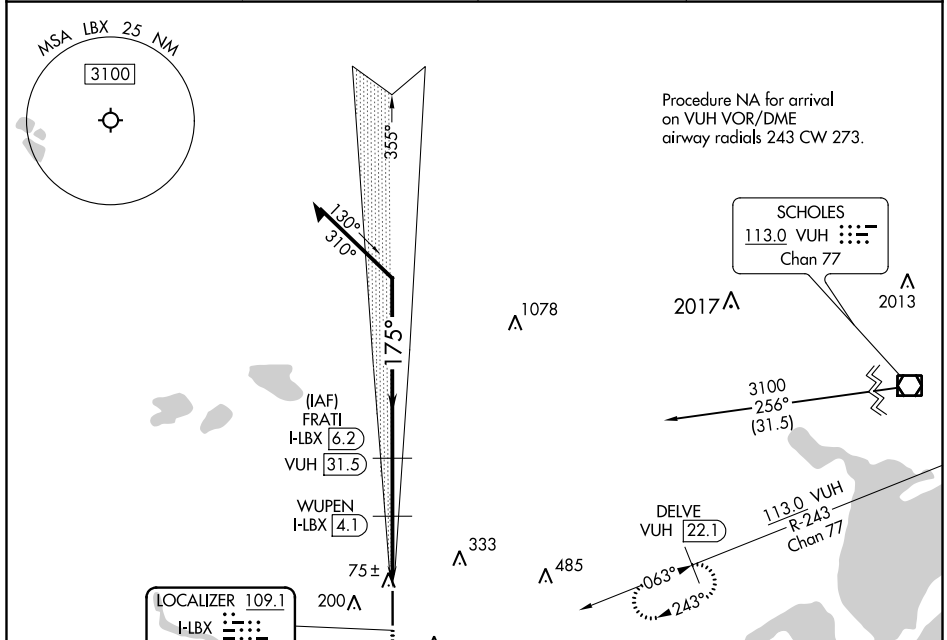
LOC/DME I-LBX 109.1 Chan 28	APP CRS 175°	Rwy Idg TDZE 25 Apt Elev 25
---	------------------------	---

ILS or LOC RWY 17

TEXAS GULF COAST RGNL (L.BX)

DME required.		MALSR	MISSED APPROACH: Climb to 600 then climbing left turn to 3000 on VUH VOR/DME R-243 to DELVE/VUH 22.1 DME and hold.
⚠ For inop ALS, increase S-LOC 17 Cat C/D visibility to 7/8 SM. ⚠ Circling NA east of Rwy 17-35.			

ASOS 119.925	HOUSTON APP CON 134.45 284.0	CLNC DEL 125.2	UNICOM 123.0 (CTAF) 0
------------------------	--	--------------------------	---------------------------------



CATEGORY	A	B	C	D
S-ILS 17		225-1/2	200 (200-1/2)	
S-LOC 17		340-1/2	315 (400-1/2)	
CIRCLING	500-1	475 (500-1)	500-1/2 475 (500-1/2)	620-2 595 (600-2)

SC-5, 08 OCT 2020 to 05 NOV 2020

SC-5, 08 OCT 2020 to 05 NOV 2020