

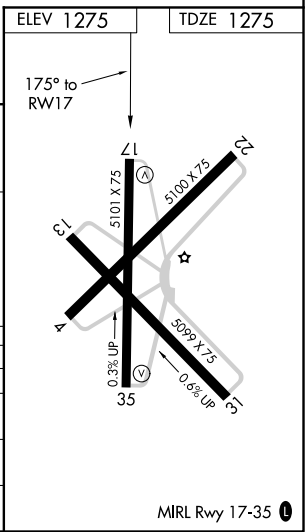
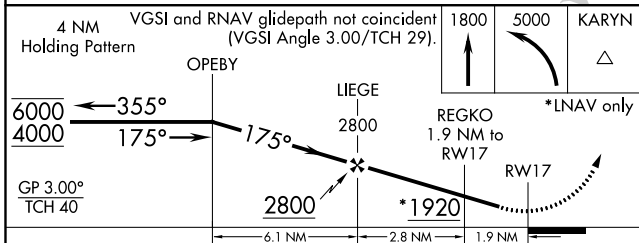
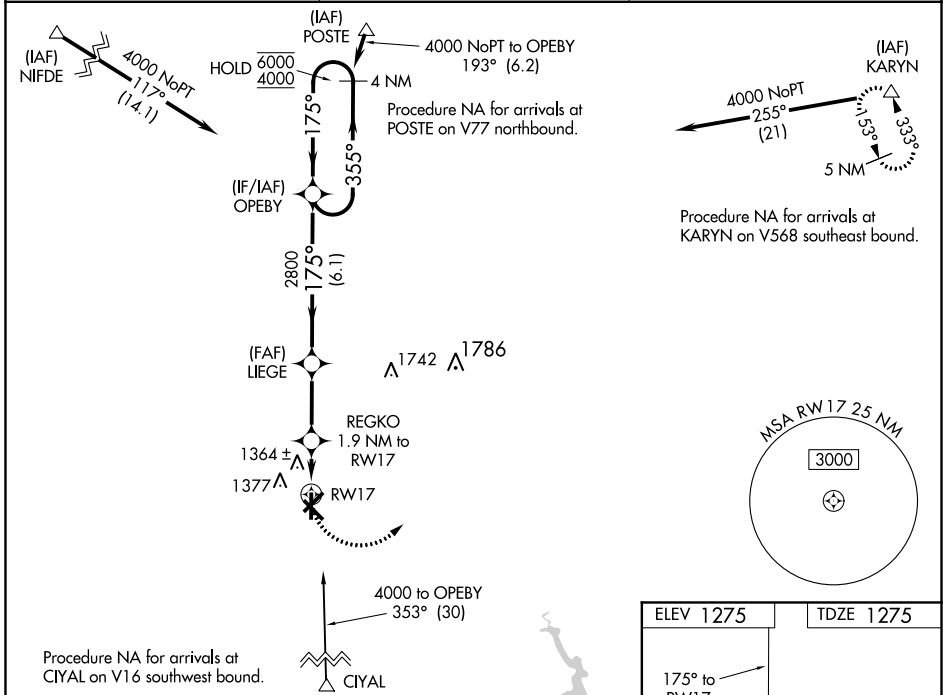
WAAS CH <b>97332</b> <b>W17A</b>	APP CRS <b>175°</b>	Rwy Idg TDZE Apt Elev	<b>5101</b> <b>1275</b> <b>1275</b>
--	------------------------	-----------------------------	---

# RNAV (GPS) RWY 17

OLNEY MUNI (ONY)

RNP APCH.	Rwy 17 helicopter visibility reduction below 3/4 SM NA. Baro-VNAV NA. Use Graham altimeter setting; when not received, use Kickapoo Downtown altimeter setting and increase all DA 52 feet all MDA 60 feet; increase LPV all Cats, LNAV/VNAV all Cats and LNAV Cat C visibility 1/8 SM.	MISSED APPROACH: Climb to 1800 then climbing left turn to 5000 direct KARYN and hold.
-----------	---	--

RPH AWOS-3 <b>118.025</b>	FORT WORTH CENTER <b>133.5 350.35</b>	UNICOM <b>122.8 (CTAF) 0</b>
------------------------------	--	---------------------------------



CATEGORY	A	B	C	D
LPV DA	1592-7/8	317 (400-7/8)		NA
LNAV/VNAV DA	1592-7/8	317 (400-7/8)		NA
LNAV MDA	1700-1	425 (500-1)	1700-1 1/4 425 (500-1 1/4)	NA
CIRCLING	1760-1	485 (500-1)	1760-1 1/2 485 (500-1 1/2)	NA

SC-2, 08 OCT 2020 to 05 NOV 2020

SC-2, 08 OCT 2020 to 05 NOV 2020