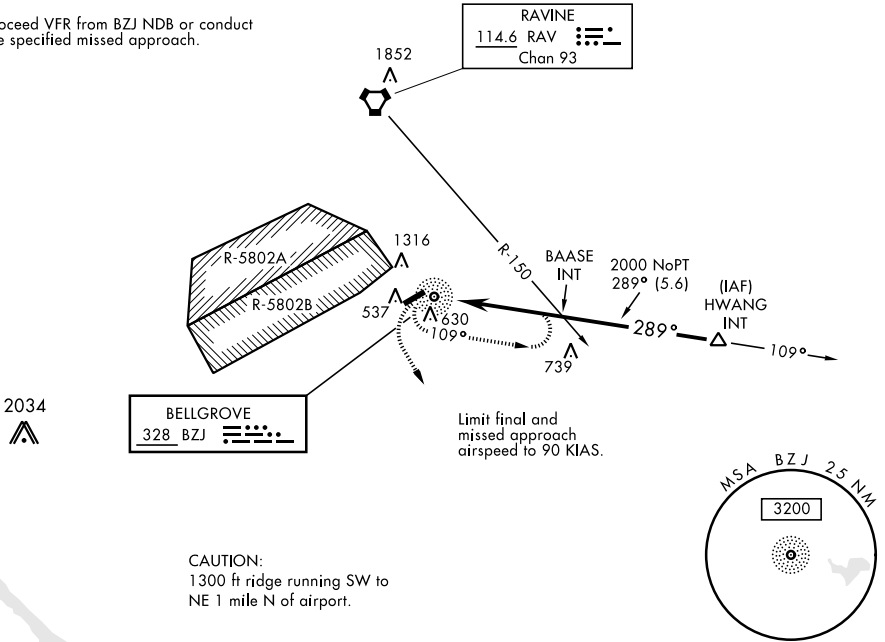


NDB BZJ 328	APCH CRS 289°	Rwy ldg TDZE Arprt Elev N/A 487	AL-6422 [USA]	MUIR AAF (KMUI)
<p>▼ VOR receiver required for this approach. When local altimeter setting not received, use Harrisburg INTL altimeter setting and increase MDA 80 ft.</p>		<p>MISSED APPROACH: Climb to 2000 via heading 160° then climbing left turn to 2900 direct BZJ NDB and hold.</p>		
ASOS 124.175	HARRISBURG APP CON 118.25 269.45	MUIR TOWER ★ 126.2 (CTAF) 0 290.5	GND CON 121.625 269.525	

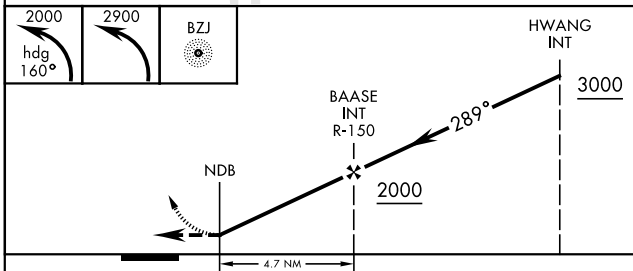
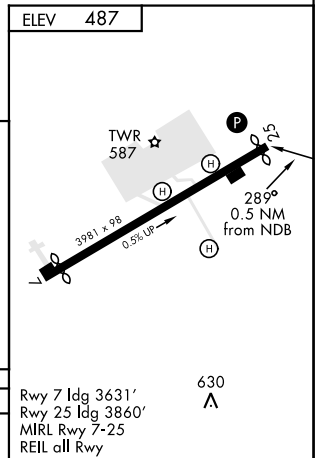
Procedure NA for arrivals at HWANG INT via V162 eastbound and V170 southeast bound.

Proceed VFR from BZJ NDB or conduct the specified missed approach.



Limit final and missed approach airspeed to 90 KIAS.

CAUTION:
1300 ft ridge running SW to NE 1 mile N of airport.



CATEGORY	COPTER	
H-289°	1000-3/4	461 (500-3/4)

NE-4, 08 OCT 2020 to 05 NOV 2020

NE-4, 08 OCT 2020 to 05 NOV 2020