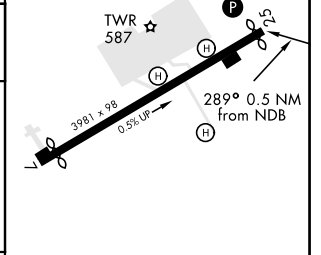
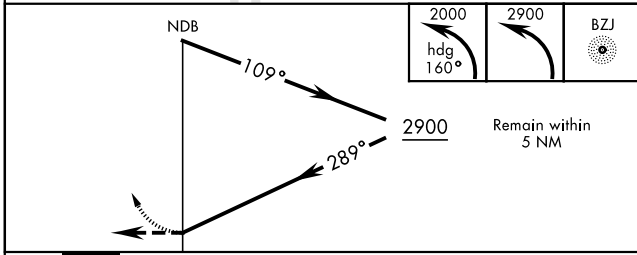
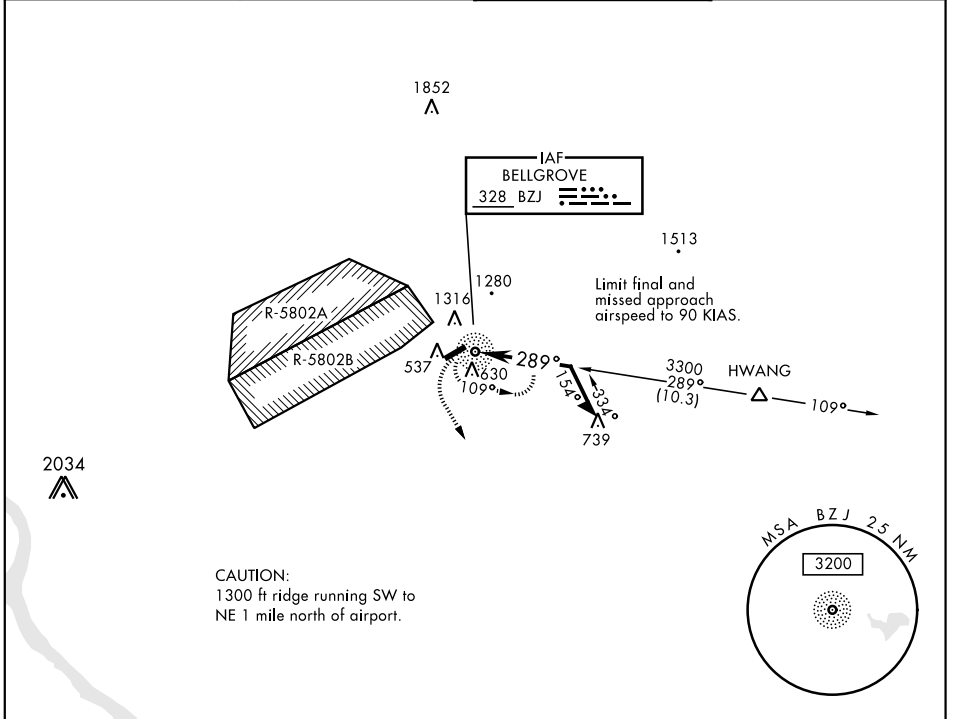


NDB BZJ 328	APCH CRS 289°	Rwy ldg TDZE Arprt Elev N/A 487	AL-6422 [USA]	MUIR AAF (KMUI)
-----------------------	-------------------------	--	---------------	-----------------

⚠ When local altimeter setting not received, use Harrisburg INTL altimeter setting and increase MDA 80 ft.
⚠ Proceed VFR from BZJ NDB or conduct the specified missed approach.

MISSED APPROACH: Climb to 2000 via heading 160° then climbing left turn to 2900 direct BZJ NDB and hold.

ASOS 124.175	HARRISBURG APP CON 118.25 269.45	MUIR TOWER ★ 126.2 (CTAF) 0 290.5	GND CON 121.625 269.525
------------------------	--	---	-----------------------------------



CATEGORY	COPTER		
H-289°	1040-¾	501	(600-¾)

Rwy 7 ldg 3631'
 Rwy 25 ldg 3860'
 MIRL Rwy 7-25
 REIL all Rwy

630
 ⚠

NE-4, 08 OCT 2020 to 05 NOV 2020

NE-4, 08 OCT 2020 to 05 NOV 2020