

APP CRS	Rwy Idg	2901
167°	TDZE	574
	Apt Elev	574

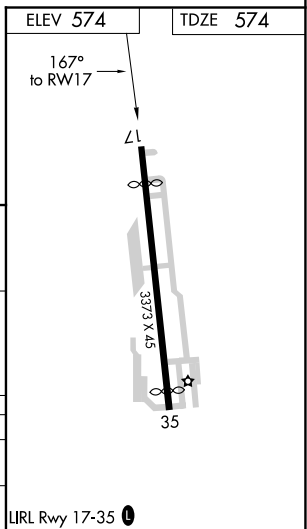
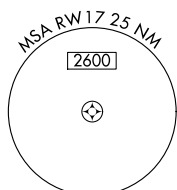
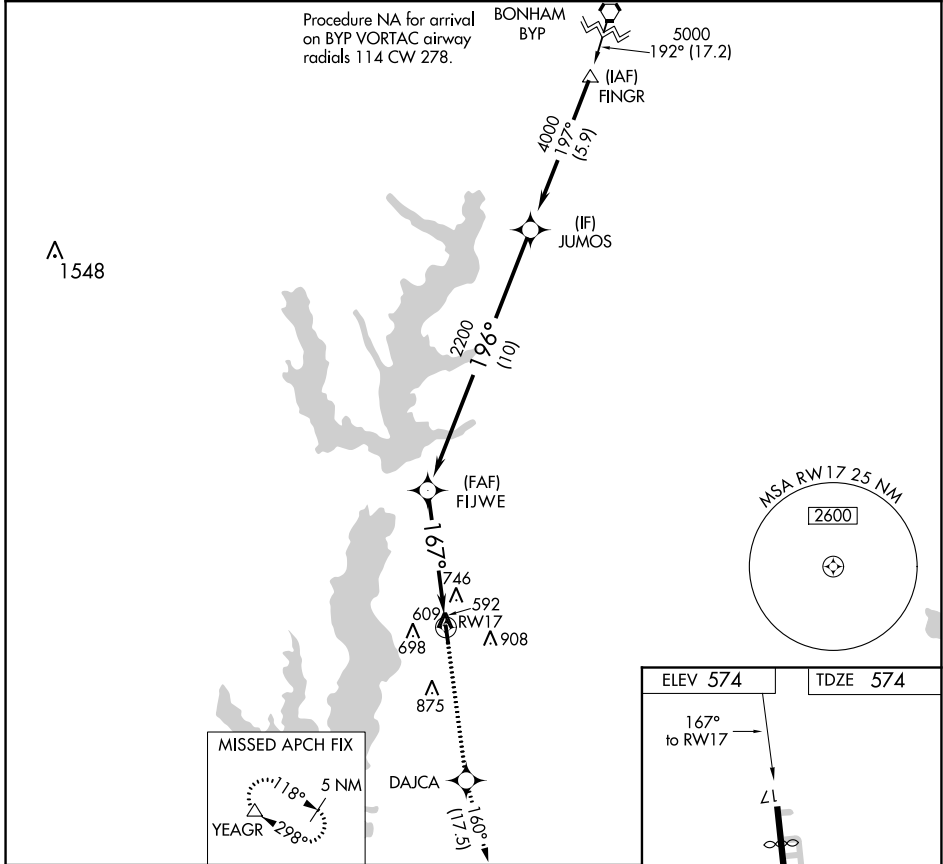
RNAV (GPS) RWY 17

RALPH M HALL/ROCKWALL MUNI (F46)

⚠ DME/DME RNP-0.3 NA. When local altimeter setting not received, use Dallas Love Field altimeter setting and increase all MDA 80 feet. Helicopter visibility reduction below 1 SM NA. Procedure NA at night.

MISSED APPROACH: Climb to 5000 direct DAJCA and on track 160° to YEAGR and hold.

AWOS-3 121.25	REGIONAL APP CON 124.3 282.275	UNICOM 122.8 (CTAF) 0
-------------------------	--	---------------------------------



JUMOS	4000	196°	5000	DAJCA	tr 160°	YEAGR
			FIJWE	3.00°	TCH 40 RWY17	
			2200	167°		
	10 NM		5 NM			
CATEGORY	A	B	C	D		
LNVA MDA	1140-1	566 (600-1)	NA			
CIRCLING	1280-1	706 (800-1)	NA			

SC-2, 08 OCT 2020 to 05 NOV 2020

SC-2, 08 OCT 2020 to 05 NOV 2020