

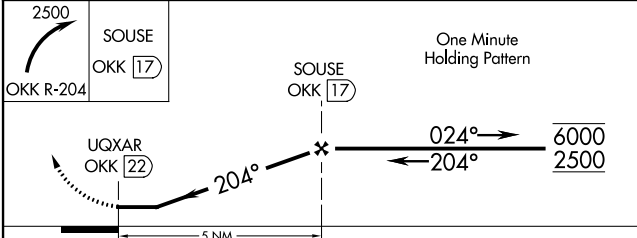
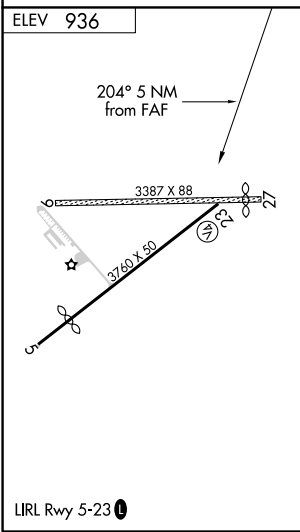
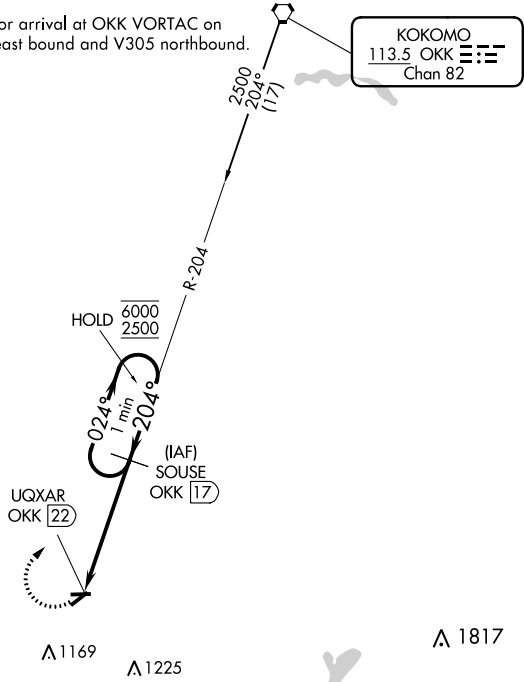
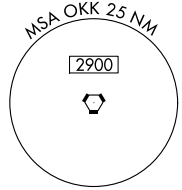
VORTAC OKK <b>113.5</b> Chan <b>82</b>	APP CRS <b>204°</b>	Rwy Idg TDZE Apt Elev	<b>N/A</b> <b>N/A</b> <b>936</b>
--	------------------------	-----------------------------	--

**VOR-A**  
SHERIDAN (5I4)

DME required.		MISSED APPROACH: Climbing right turn to 2500 on OKK VORTAC R-204 to SOUSE/17 DME and hold.
<b>NA</b>	Circling NA to Rwys 9 and 27. Procedure NA at night. Use Indianapolis Executive altimeter setting.	
TYQ AWOS-3PT <b>120.725</b>	INDIANAPOLIS APP CON <b>124.65 317.8</b>	UNICOM <b>123.075</b> (CTAF) <b>1</b>

Procedure NA for arrival at OKK VORTAC on V96-285 northeast bound and V305 northbound.

KOKOMO  
113.5 OKK **☰☷☷☷**  
Chan 82



CATEGORY	A	B	C	D
<b>CIRCLING</b>	1460-1 524 (600-1)	1480-1 544 (600-1)	1500-1½ 564 (600-1½)	NA

EC-2, 08 OCT 2020 to 05 NOV 2020

EC-2, 08 OCT 2020 to 05 NOV 2020