

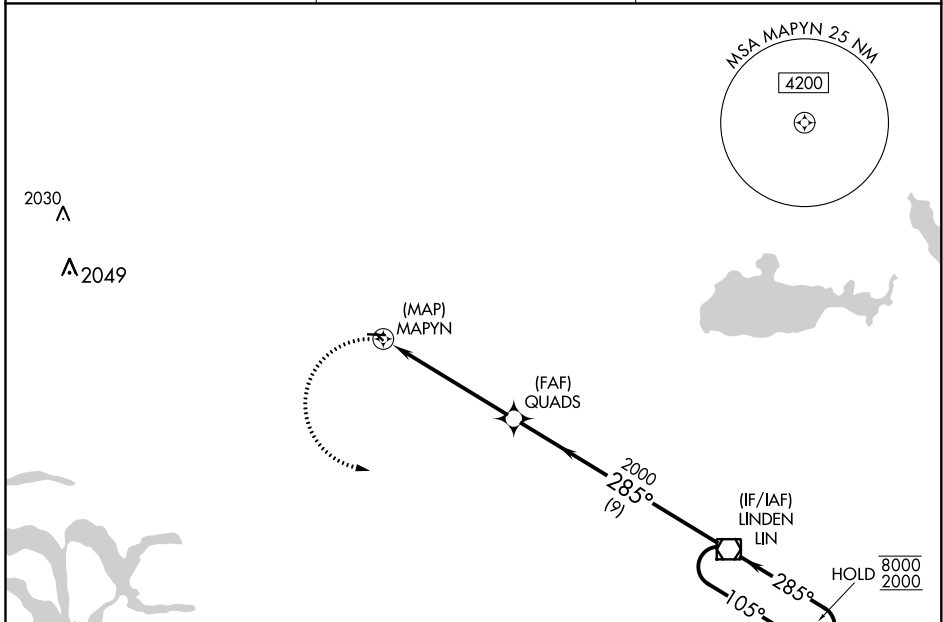
APP CRS 285°	Rwy Idg TDZE Apt Elev	N/A N/A 60
------------------------	-----------------------------	---------------------------------------

RNAV (GPS)-B

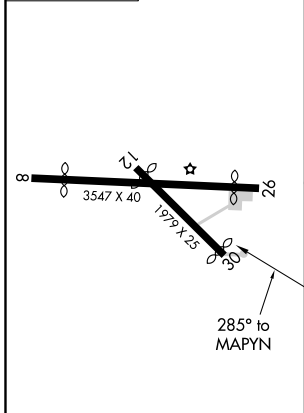
LODI (103)

RNP APCH.	MISSED APPROACH: Climbing left turn to 2000 direct LIN VOR/DME and hold.
<p>Procedure NA at night.</p> <p>Use Stockton altimeter setting; when not received, use Sacramento Intl altimeter setting and increase all MDA 40 feet.</p>	

SCK ASOS 118.25	NORCAL APP CON 125.1 363.2	CTAF 122.9
---------------------------	--------------------------------------	----------------------



ELEV 60



NoPT for arrival on LIN VOR/DME airway radials 124 CW 158.

2000	LIN	QUADS	LIN VOR/DME	4 NM Holding Pattern
2000	MAPYN	285°	105°	8000/2000
5.5 NM	9 NM			
CATEGORY	A	B	C	D
C CIRCLING	640-1	580 (600-1)		NA

LIRL Rwy 8-26

SW-2, 08 OCT 2020 to 05 NOV 2020

SW-2, 08 OCT 2020 to 05 NOV 2020