

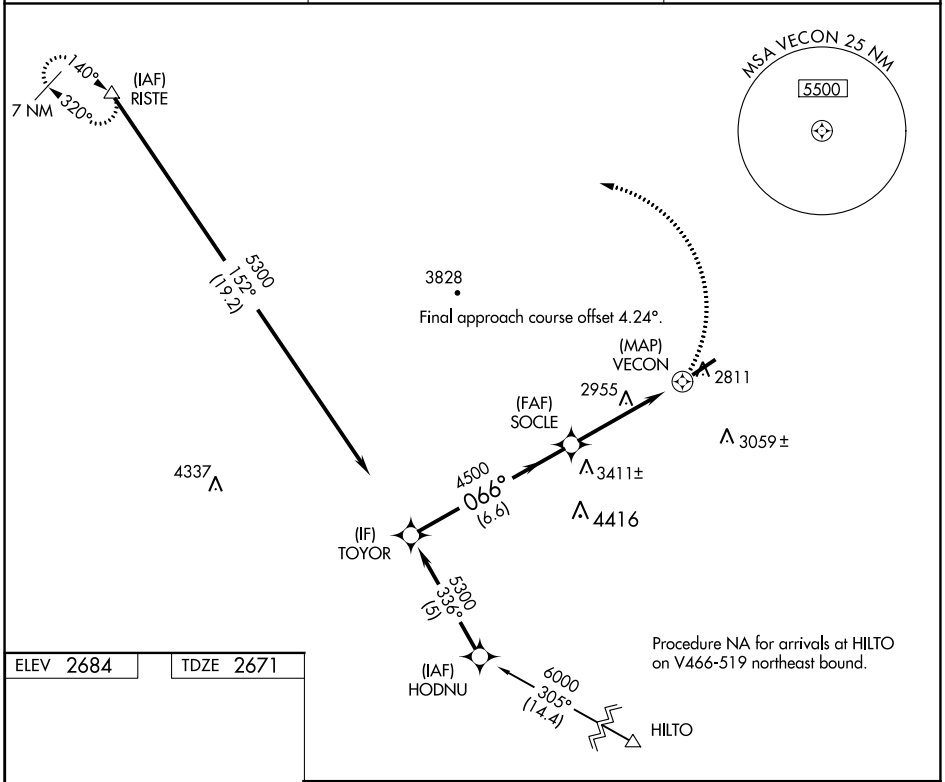
APP CRS <b>066°</b>	Rwy Idg TDZE Apt Elev	<b>5280</b> <b>2671</b> <b>2684</b>
------------------------	-----------------------------	---

# RNAV (GPS) RWY 6

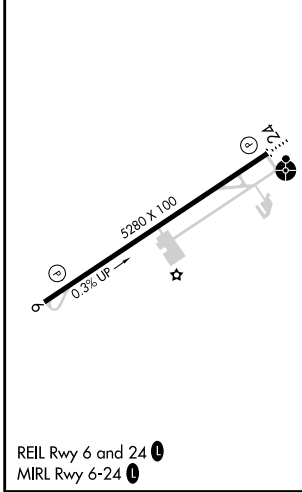
LONESOME PINE (LNP)

RNP APCH.	MISSED APPROACH: Climbing left turn to 6400 direct RISTE and hold.
▼ Procedure NA at night. ▲ Rwy 6 helicopter visibility reduction below 1 SM NA.	

AWOS-3 <b>118.6</b>	INDIANAPOLIS CENTER <b>126.575 253.5</b>	UNICOM <b>123.0</b> (CTAF) <b>0</b>
------------------------	---	--

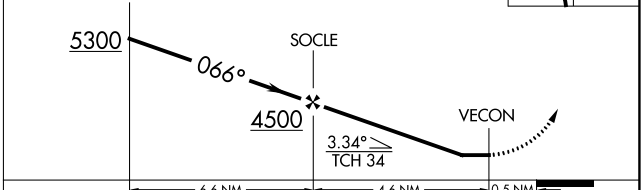


ELEV 2684	TDZE 2671
-----------	-----------



VGSI and descent angles not coincident (VGSI Angle 3.00/TCH 34).

6400	RISTE



CATEGORY	A	B	C	D
LNAV MDA	3260-1	589 (600-1)	3260-1¾	589 (600-1¾)
CIRCLING	3260-1	576 (600-1)	3260-1¾ 576 (600-1¾)	3360-2¼ 676 (700-2¼)

NE-3, 08 OCT 2020 to 05 NOV 2020

NE-3, 08 OCT 2020 to 05 NOV 2020