

WAAS CH 42810 W05A	APP CRS 045°	Rwy Idg TDZE Apt Elev	5000 35 37
--	------------------------	-----------------------------	---------------------------------------

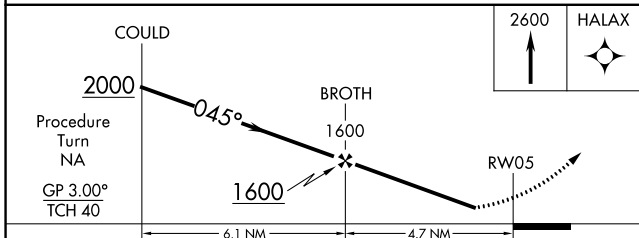
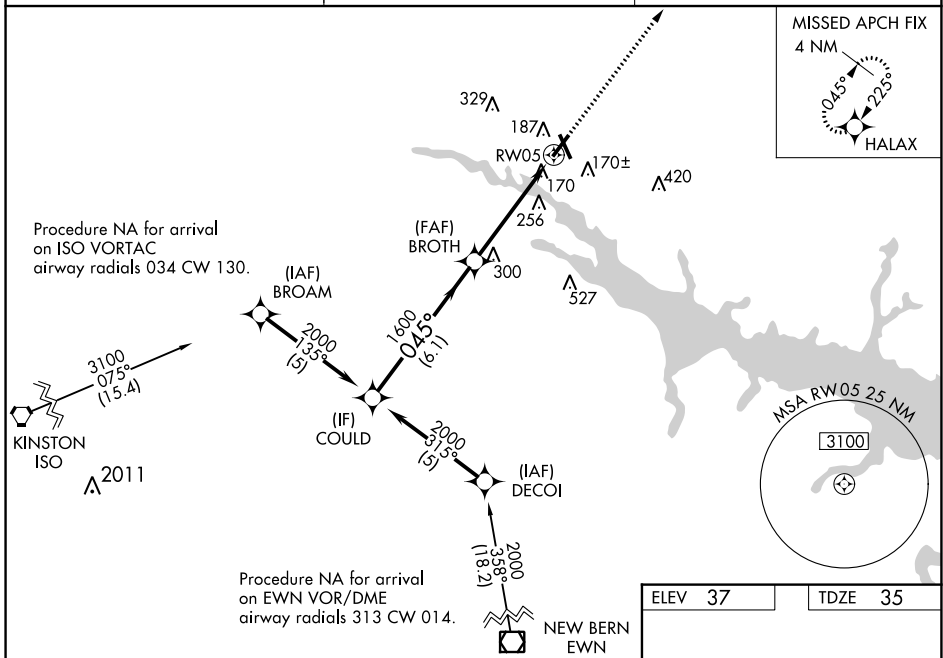
RNAV (GPS) RWY 5

WASHINGTON-WARREN (OCW)

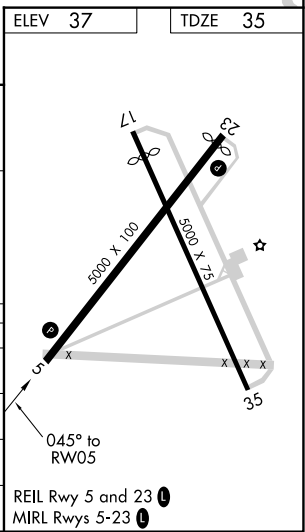
▼
▲
Night Landing: Rwy 17 NA. Baro-VNAV NA when using Greenville altimeter setting.
For uncompensated Baro-VNAV systems, LNAV/VNAV NA below -15°C (5°F) or above 48°C (118°F). DME/DME RNP-0.3 NA. Helicopter visibility reduction below ¾ SM NA. When local altimeter setting not received, use Greenville altimeter setting and increase LPV DA to 483, LNAV/VNAV DA to 518, and all MDA 60 feet; increase LNAV/VNAV all Cats. visibility ¼ mile.

MISSED APPROACH:
Climb to 2600 direct
HALAX and hold.

AWOS-3 120.175	CHERRY POINT APP CON 119.35 377.175	UNICOM 122.7 (CTAF)
--------------------------	---	-------------------------------



CATEGORY	A	B	C	D
LPV DA		442-1½	407 (500-1½)	
LNAV/VNAV DA		477-1½	442 (500-1½)	
LNAV MDA	560-1	525 (600-1)	560-1½ 525 (600-1½)	560-1¾ 525 (600-1¾)
CIRCLING	560-1	523 (600-1)	560-1½ 523 (600-1½)	620-2 583 (600-2)



SE-2, 08 OCT 2020 to 05 NOV 2020

SE-2, 08 OCT 2020 to 05 NOV 2020