

WAAS CH 93810 W23A	APP CRS 225°	Rwy Idg TDZE Apt Elev	4800 37 37
--	------------------------	-----------------------------	---------------------------------------

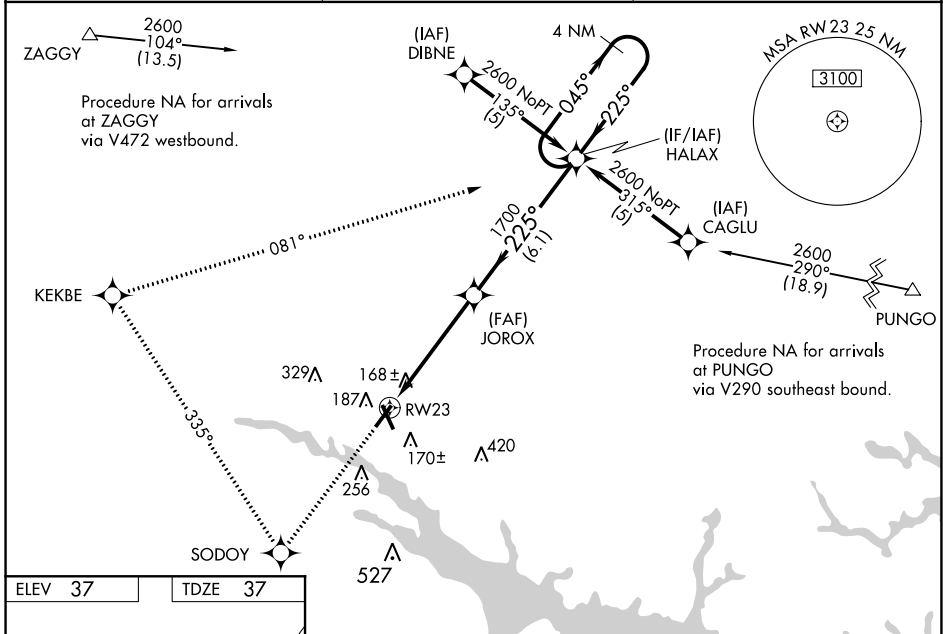
RNAV (GPS) RWY 23

WASHINGTON-WARREN (OCW)

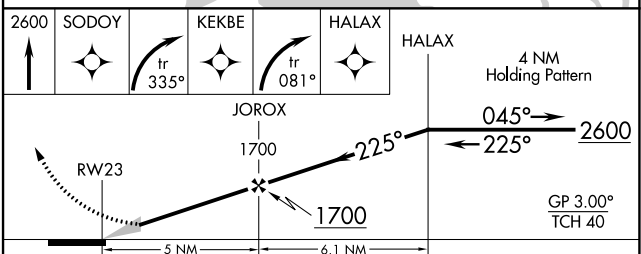
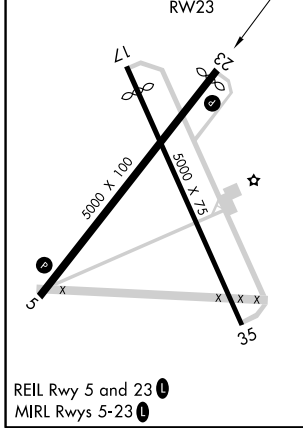
Baro-VNAV NA when using Greenville altimeter setting.
 For uncompensated Baro-VNAV systems, LNAV/VNAV NA below -15° C (5° F) or above 48° C (118° F). DME/DME RNP-0.3 NA.
 When local altimeter setting not received, use Greenville altimeter setting and increase LPV DA to 477, LNAV/VNAV DA to 514, and all MDA 60 feet; increase LNAV/VNAV all Cats., and LNAV Cats C and D visibility 1/4 mile. Night Landing: Rwy 17 NA.

MISSED APPROACH: Climb to 2600 direct SODOY and right turn via 335° track to KEKBE and right turn via 081° track to HALAX and hold.

AWOS-3 120.175	CHERRY POINT APP CON 119.35 377.175	UNICOM 122.7 (CTAF) 0
--------------------------	---	---------------------------------



ELEV 37	TDZE 37
---------	---------



CATEGORY	A	B	C	D
LPV DA		436-1½	399 (400-1½)	
LNAV/VNAV DA		473-1½	436 (500-1½)	
LNAV MDA		420-1	383 (400-1)	420-1¼ 383 (400-1¼)
CIRCLING	540-1	503 (600-1)	540-1½ 503 (600-1½)	620-2 583 (600-2)

SE-2, 08 OCT 2020 to 05 NOV 2020

SE-2, 08 OCT 2020 to 05 NOV 2020