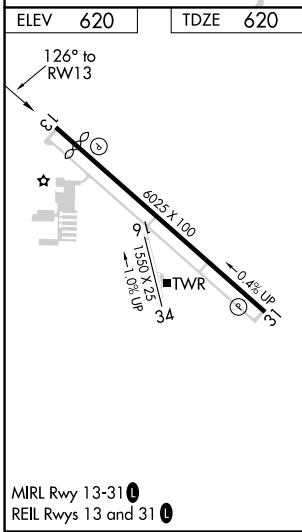
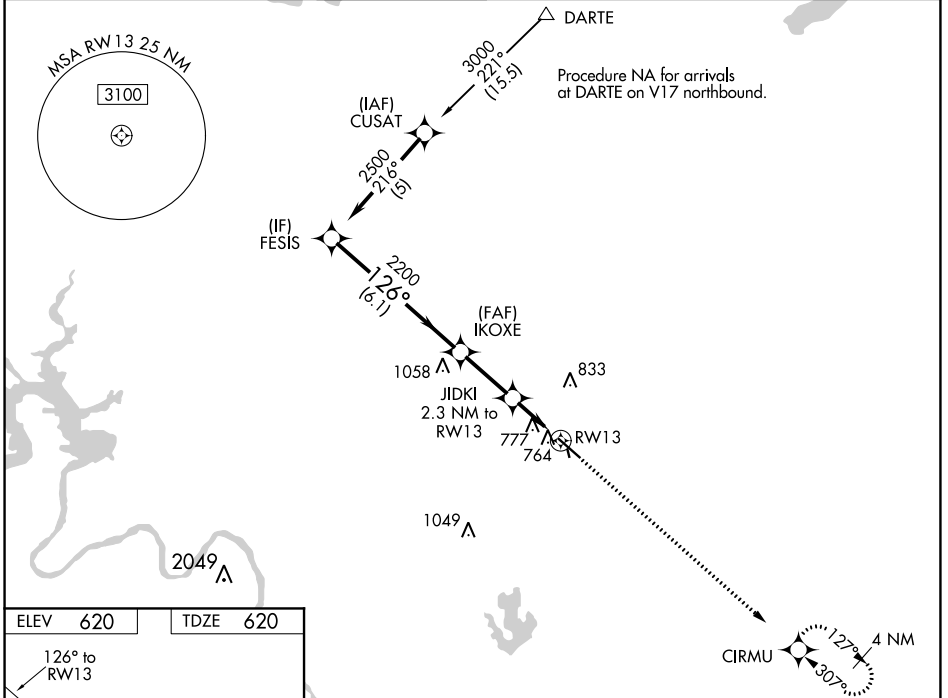


WAAS CH 63116 W13A	APP CRS 126°	Rwy Idg 5425 TDZE 620 Apt Elev 620
--	------------------------	---

RNAV (GPS) RWY 13

AUSTIN EXECUTIVE (EDC)

RNP APCH.		<p>▼ Baro-VNAV NA when using Austin-Bergstrom Intl altimeter setting. For uncompensated Baro-VNAV systems, LNAV/VNAV NA below -16°C (4°F) or above 47°C (116°F). Visibility reduction by helicopters NA. When local altimeter setting not received, use Austin-Bergstrom Intl altimeter setting: increase LPV DA to 912 feet, increase LNAV/VNAV DA to 1168 feet; increase all MDA 60 feet. VDP NA with Austin-Bergstrom Intl altimeter setting. Circling NA to Rwy 16 and 34.</p>		<p>MISSED APPROACH: Climb to 2100 direct CIRMU and hold.</p>	
AWOS-3 118.825	APP CON 127.225 317.65	EXECUTIVE TOWER* 120.3 (CTAF) 0	GND CON 119.45	CLNC DEL 126.025 (when tower closed)	UNICOM 122.975



ELEV 620	TDZE 620	<p>2100 CIRMU</p> <p>↑</p>		
<p>Procedure Turn NA</p> <p>GP 3.00°</p> <p>TCH 40</p>		<p>*LNAV only.</p>		
<p>2500</p> <p>126°</p> <p>2200</p> <p>*1380</p> <p>6.1 NM</p> <p>2.5 NM</p> <p>1 NM</p> <p>1.3 NM</p>		<p>RWY 13</p>		
CATEGORY	A	B	C	D
LPV DA		870-1	250 (300-1)	
LNAV/VNAV DA		1126-1¾	506 (600-1¾)	
LNAV MDA	1080-1	460 (500-1)	1080-1¾ 460 (500-1¾)	1080-1½ 460 (500-1½)
C CIRCLING	1140-1 520 (600-1)	1160-1 540 (600-1)	1160-1½ 540 (600-1½)	1220-2 600 (600-2)

AUSTIN, TEXAS
Orig-A 30JAN20

30°24'N-97°34'W

AUSTIN EXECUTIVE (EDC) RNAV (GPS) RWY 13

SC-3, 08 OCT 2020 to 05 NOV 2020

SC-3, 08 OCT 2020 to 05 NOV 2020