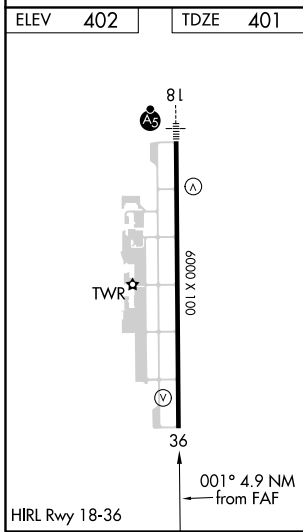
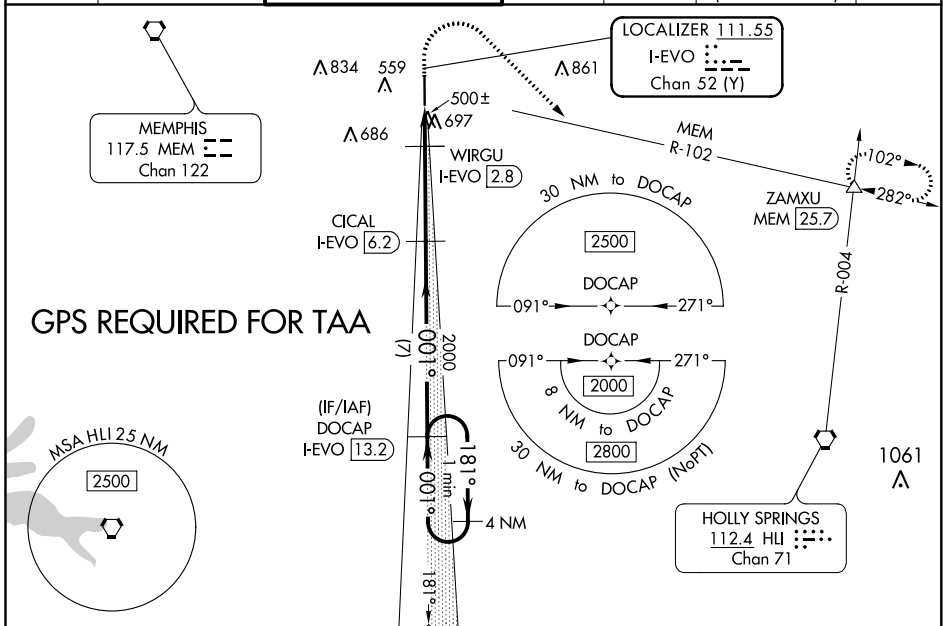


LOC/DME	I-EVO	APP CRS	Rwy Idg	6000
	111.55	001°	TDZE	401
Chan	52 (Y)		Apt Elev	402

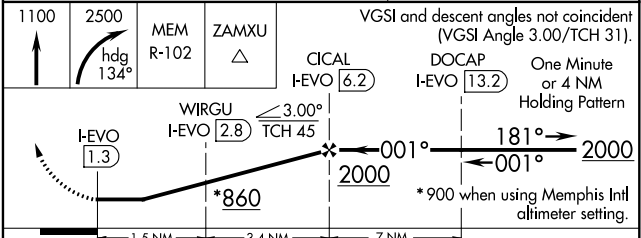
LOC RWY 36

OLIVE BRANCH (OLV)

<p>▼ When local altimeter setting not received, use Memphis Intl altimeter setting and increase all MDA 40 feet; increase S-LOC 36 Cats C and D visibility 1/8 mile and Circling Cats C and D visibility 1/4 mile. Rwy 36 helicopter visibility reduction below 3/4 SM NA. DME required.</p>			<p>MISSED APPROACH: Climb to 1100 then climbing right turn to 2500 on heading 134° and MEM VORTAC R-102 to ZAMXU/MEM 25.7 DME and hold.</p>			
ATIS	MEMPHIS APP CON	OLIVE BRANCH TOWER ★	GND CON	CLNC DEL	CLNC DEL	UNICOM
119.925	125.8 338.3	125.275 (CTAF) 0	121.2	121.2	121.3 (When twr closed)	122.95



ALTERNATE MISSED APCH FIX		HOLLY SPRINGS	
		HLI 112.4 Chan 71	



CATEGORY	A	B	C	D
S-36	760-1 359 (400-1)			
C CIRCLING	1060-1	658 (700-1)	1060-1 ^{3/4} 658 (700-1 ^{3/4})	1200-2 ^{1/2} 798 (800-2 ^{1/2})

SC-4, 08 OCT 2020 to 05 NOV 2020

SC-4, 08 OCT 2020 to 05 NOV 2020