

APP CRS	Rwy Idg	6001
331°	TDZE	121
	Apt Elev	121

RNAV (GPS) RWY 33

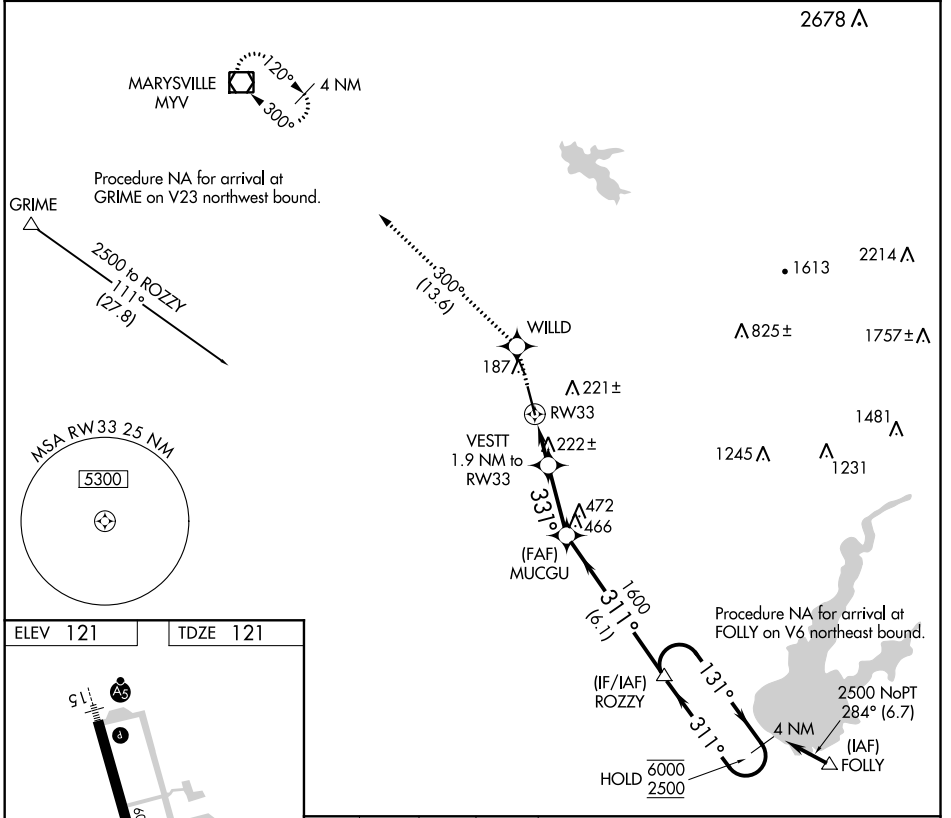
LINCOLN RGNL/KARL HARDER FIELD (LHM)

RNP APCH.

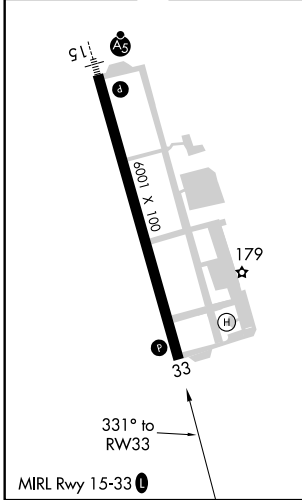
⚠ Rwy 33 helicopter visibility reduction below ¼ SM NA. When local altimeter setting not received, use Beale AFB altimeter setting and increase all MDA 40 feet, and increase LNAV Cat C/D visibility ½ mile. VDP NA with Beale AFB altimeter setting.

MISSED APPROACH: Climb to 2000 direct WILLD and on track 300° to MYV VOR/DME and hold.

AWOS-3 124.25	NORCAL APP CON 125.4 259.1	UNICOM 123.0 (CTAF) 0
-------------------------	--------------------------------------	---------------------------------



ELEV 121	TDZE 121
----------	----------



2000	WILLD	MYV	ROZZY	4 NM Holding Pattern
	\star	tr 300°		
	VESTIT 1.9 NM to RW33	MUCCGU	ROZZY	4 NM Holding Pattern
	0.9 NM to RW33			
	3.04° TCH 31	1600	131°	6000 / 2500
	0.9 NM 1 NM 2.6 NM 6.1 NM		311°	
CATEGORY	A	B	C	D
LNAV MDA	480-1 359 (400-1)			

SW-2, 08 OCT 2020 to 05 NOV 2020

SW-2, 08 OCT 2020 to 05 NOV 2020