

|                        |                        |
|------------------------|------------------------|
| APP CRS<br><b>002°</b> | Rwy Idg<br><b>4002</b> |
|                        | TDZE<br><b>620</b>     |
|                        | Apt Elev<br><b>620</b> |

# RNAV (GPS) RWY 36

LANSING MUNI (IGQ)

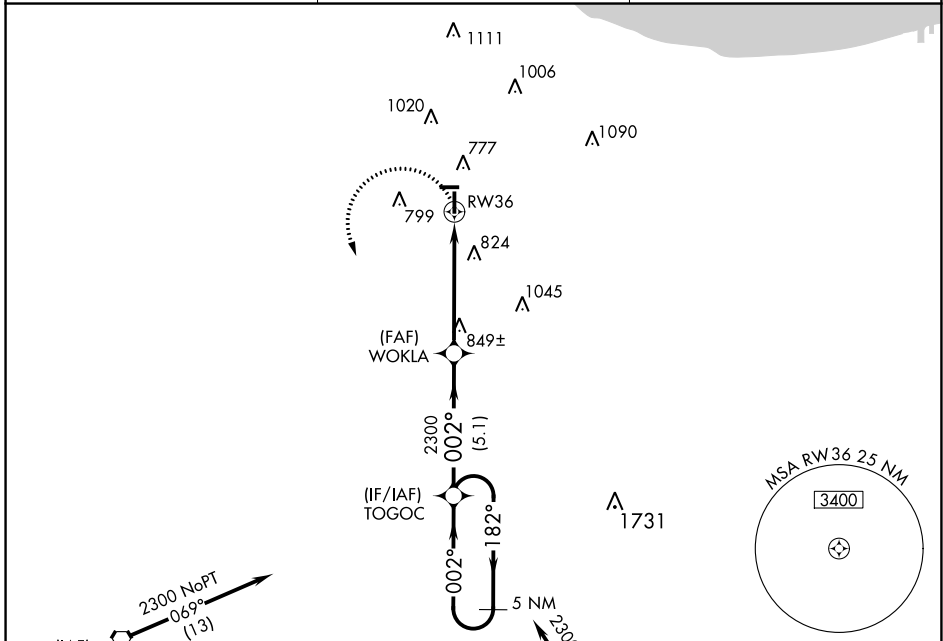
**⚠** DME/DME RNP-0.3 NA. VDP NA when using Chicago Midway Intl altimeter setting. Circling Rwy 9 NA at night. When local altimeter setting not received, use Chicago Midway Intl altimeter setting and increase all MDAs 60 feet.

**MISSED APPROACH:**  
Climbing left turn to 2300 direct TOGO and hold.

AWOS-3  
**119.275**

CHICAGO APP CON  
**128.2 285.6**

UNICOM  
**122.7 (CTAF) 0**



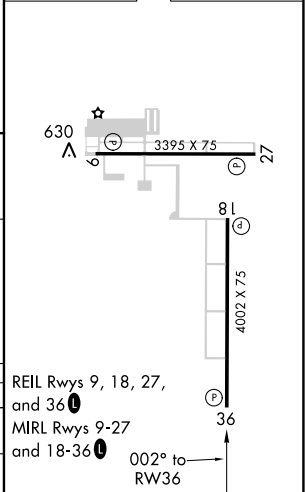
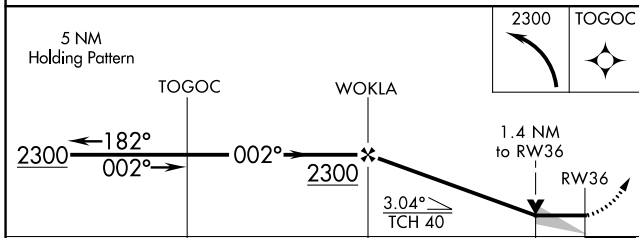
EC-3, 08 OCT 2020 to 05 NOV 2020

EC-3, 08 OCT 2020 to 05 NOV 2020

Procedure NA for arrival on EON VORTAC airway radials 096 CW 150.

Procedure NA for arrivals at LUCIT on V7-51-97 southeast bound and V38-156 eastbound.

|          |          |
|----------|----------|
| ELEV 620 | TDZE 620 |
|----------|----------|



| CATEGORY | A      | B           | C | D  |
|----------|--------|-------------|---|----|
| LNAV MDA | 1100-1 | 480 (500-1) |   | NA |
| CIRCLING | 1140-1 | 520 (600-1) |   | NA |

REIL Rwy 9, 18, 27, and 36  
MIRL Rwy 9-27 and 18-36  
002° to RWY 36