

020Z \ 0N \ 0Z 11 OCT 2020 to 05 NOV 2020 'E-W-S

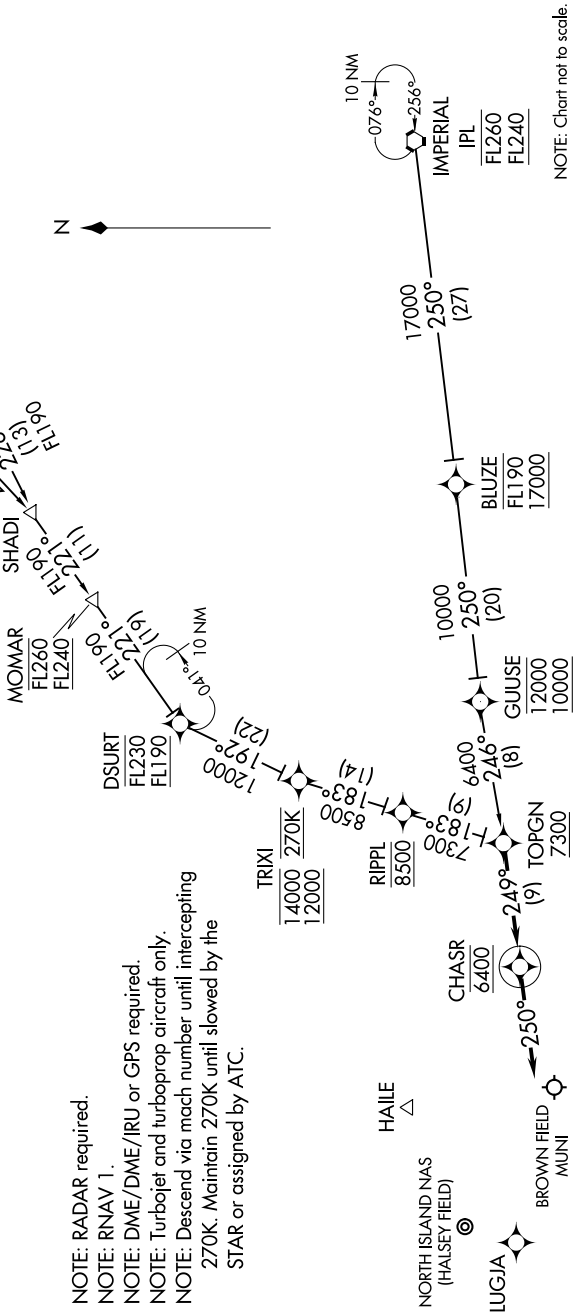
**ARRIVAL ROUTE DESCRIPTION**

IMPERIAL TRANSITION (IPL.CHASR2)  
MOMAR TRANSITION (MOMAR.CHASR2)  
PARKER TRANSITION (PKE.CHASR2)  
TTRUE TRANSITION (TTRUE.CHASR2)

NZY/SDM: From TOPGN on track 249° to cross CHASR at 6400, then on track 250°. Expect RADAR vectors to final approach course.

SOCAL APP CON  
 124.35 279.625  
 KNZY ATIS ★  
 317.8  
 SDM ATIS  
 132.35

NOTE: RADAR required.  
 NOTE: RNAV 1.  
 NOTE: DME/DME/IRU or GPS required.  
 NOTE: Turbojet and turbo-prop aircraft only.  
 NOTE: Descend via mach number until intercepting 270K. Maintain 270K until slowed by the STAR or assigned by ATC.



SW-3, 08 OCT 2020 to 05 NOV 2020