

WAAS CH <b>99509</b> <b>W27A</b>	APP CRS <b>272°</b>	Rwy Idg TDZE <b>525</b> Apt Elev <b>530</b>
--	------------------------	---

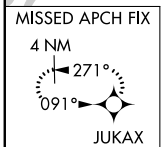
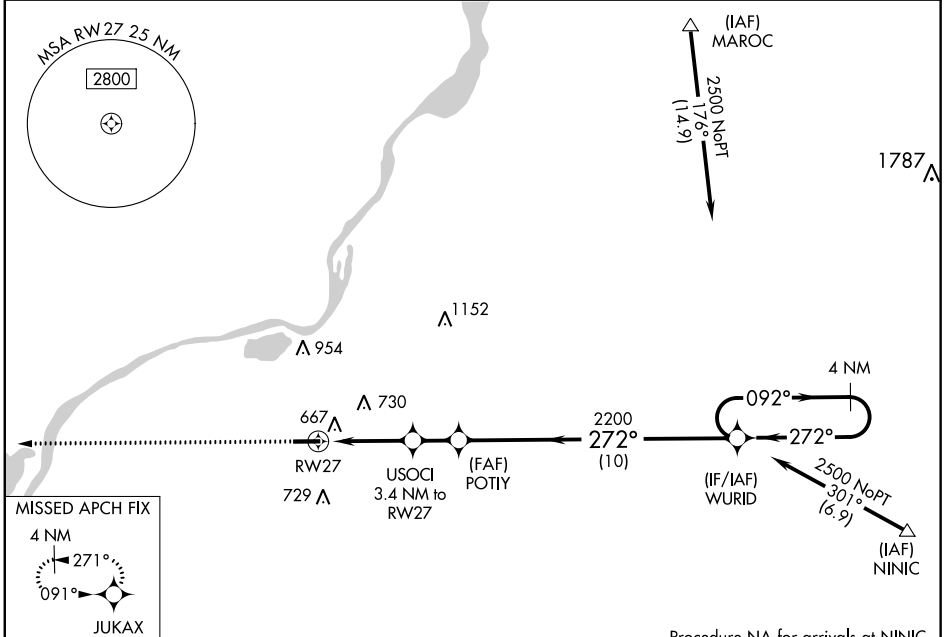
# RNAV (GPS) RWY 27

PEKIN MUNI (C15)

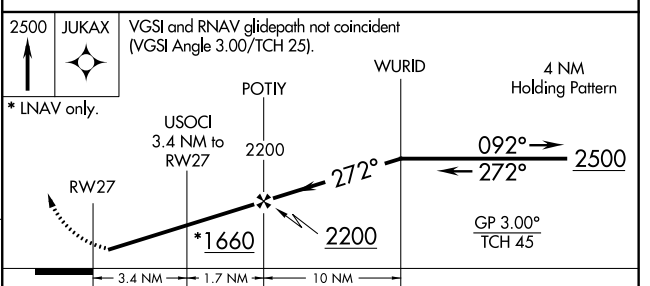
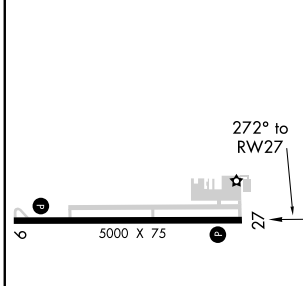
**NA** Baro-VNAV NA. DME/DME RNP-0.3 NA. Visibility reduction by helicopters NA. Use General Downing-Peoria Intl altimeter setting; when not received use Logan County altimeter setting and increase all DA 25 feet and all MDA 40 feet.

**MISSED APPROACH:** Climb to 2500 direct JUKAX and hold.

PEORIA APP CON <b>124.675 269.2</b>	UNICOM <b>122.8 (CTAF)</b>
--	-------------------------------



ELEV 530	TDZE 525
----------	----------



CATEGORY	A	B	C	D
LPV DA	864-1¼ 339 (400-1¼)			
LNAV/VNAV DA	1010-1¾ 485 (500-1¾)			
LNAV MDA	1020-1	495 (500-1)	1020-1¼ 495 (500-1¼)	1020-1½ 495 (500-1½)
CIRCLING	1060-1	530 (600-1)	1060-1½ 530 (600-1½)	1080-2 550 (600-2)

REIL Rwy 9 and 27  
MIRL Rwy 9-27

EC-3, 08 OCT 2020 to 05 NOV 2020

EC-3, 08 OCT 2020 to 05 NOV 2020