

APP CRS <b>334°</b>	Rwy Idg <b>4000</b>
	TDZE <b>928</b>
	Apt Elev <b>928</b>

# RNAV (GPS) RWY 33

KNOXVILLE MUNI (OXXV)

**▼** DME/DME RNP-0.3 NA. Visibility reduction by helicopters NA. Baro-VNAV and VDP NA when using Pella altimeter setting.

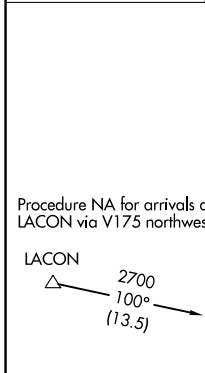
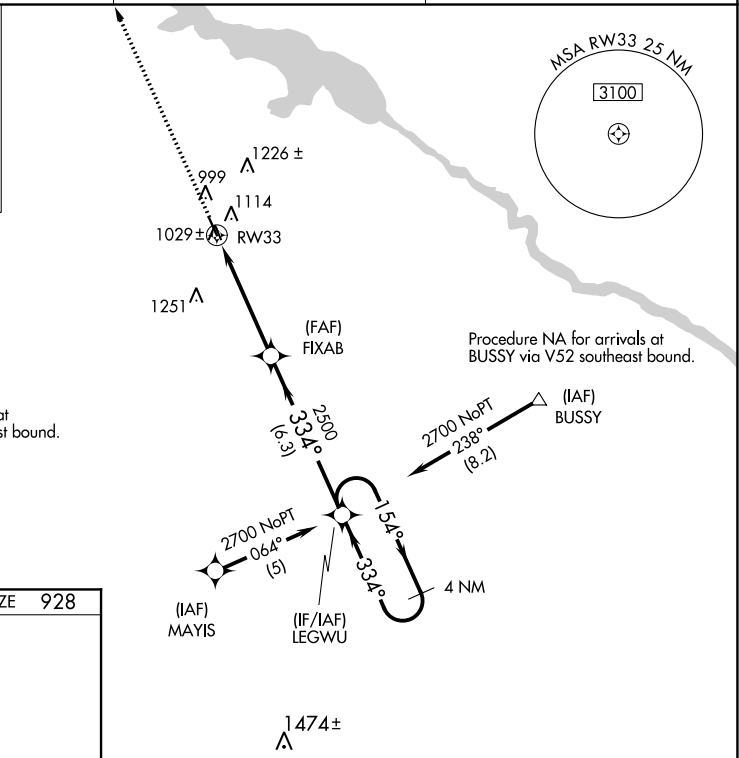
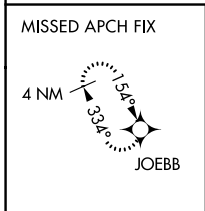
**▲** When local altimeter setting not received, use Pella altimeter setting and increase all DA 29 feet, all MDA 40 feet, LNAV/VNAV all Cats visibility 1/4 mile. For uncompensated Baro-VNAV systems, LNAV/VNAV NA below -16°C (4°F) or above 54°C (130°F).

MISSED APPROACH: Climb to 3000 direct JOEBB and hold.

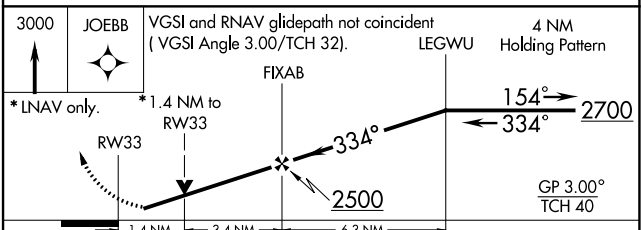
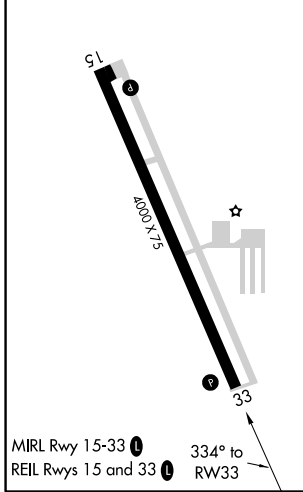
AWOS-3  
**119.775**

DES MOINES APP CON  
**123.9 307.15**

UNICOM  
**122.8 (CTAF)**



ELEV 928	TDZE 928
----------	----------



CATEGORY	A	B	C	D
LNAV/VNAV DA	1299-1¼	371 (400-1¼)		NA
LNAV MDA	1400-1	472 (500-1)		NA
CIRCLING	1480-1	552 (600-1)		NA

NC-3, 08 OCT 2020 to 05 NOV 2020

NC-3, 08 OCT 2020 to 05 NOV 2020