

VORTAC PXR <b>115.6</b> Chan <b>103</b>	APP CRS <b>003°</b>	Rwy Idg TDZE Apt Elev <b>1510</b>	N/A N/A
---	------------------------	--	------------

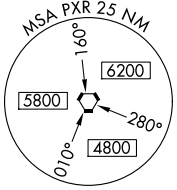
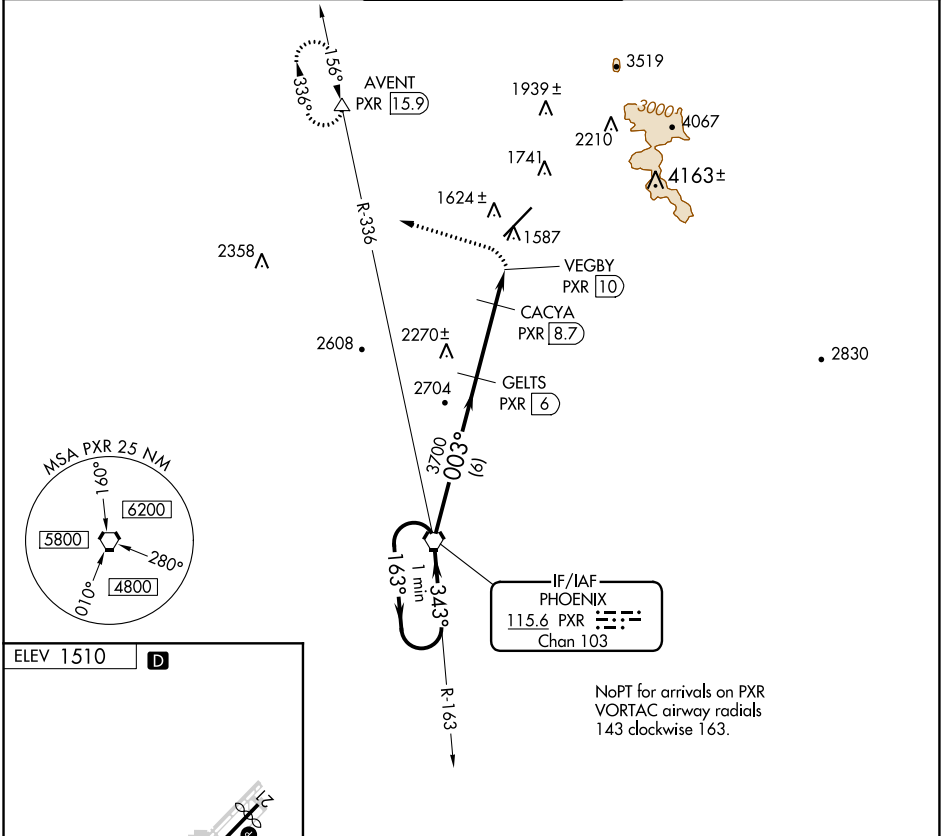
# VOR/DME-A

SCOTTSDALE (SDL)

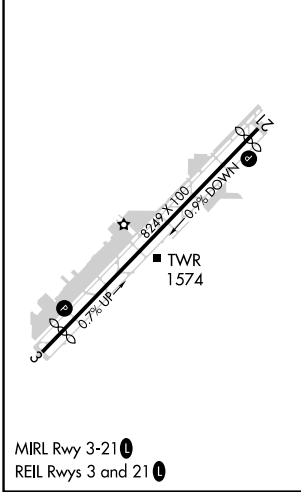
**⚠** When local altimeter setting not received, use Phoenix Sky Harbor altimeter setting and increase all MDAs 100 feet and Cat C visibility ¼ mile.

**⚠** MISSED APPROACH: Climbing left turn to 7000 on heading 280° and on PXR VORTAC R-336 to AVENT/PXR 15.9 DME and hold, continue climb-in-hold to 7000.

ATIS★ <b>118.6</b>	PHOENIX APP CON <b>120.7 239.0</b>	SCOTTSDALE TOWER★ <b>119.9 (CTAF)</b> <b>0</b>	GND CON <b>121.6</b>	CLNC DEL <b>124.8</b>
-----------------------	---------------------------------------	---	-------------------------	--------------------------



ELEV 1510 **D**



One Minute Holding Pattern	PXR VORTAC		7000	PXR R-336	AVENT
	GELTS PXR (6)		hdg 280°		△
4200	← 163°	→ 343°	003°	CACYA PXR (8.7)	VEGBY PXR (10)
			3700		
				2700	
				6 NM	2.7 NM
				1.3	
CATEGORY	A	B	C	D	
CIRCLING	2380-1½	870 (900-1½)	2380-2½ 870 (900-2½)	2380-2¾ 870 (900-2¾)	

SW-4, 08 OCT 2020 to 05 NOV 2020

SW-4, 08 OCT 2020 to 05 NOV 2020