

APP CRS	Rwy Idg	N/A
109°	TDZE	N/A
	Apt Elev	1510

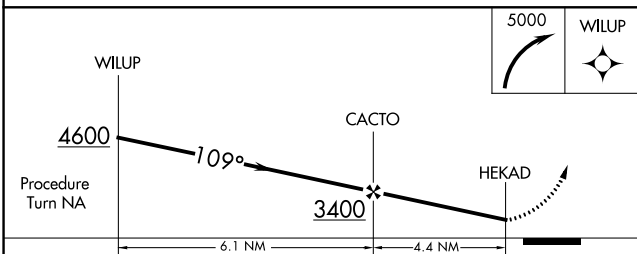
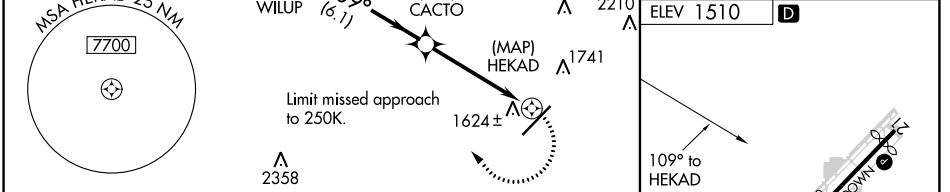
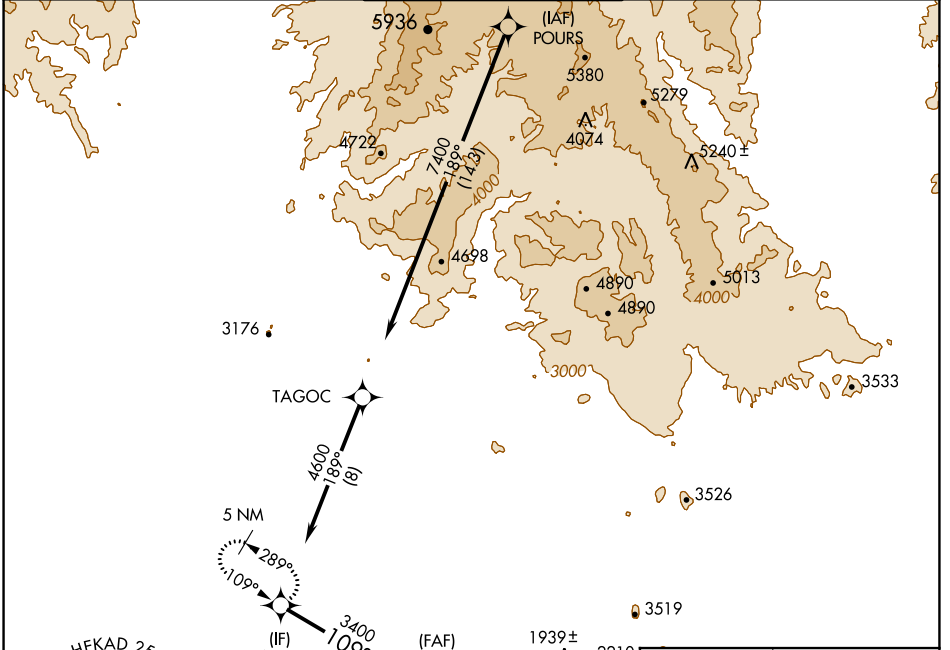
RNAV (GPS)-D

SCOTTSDALE (SDL)

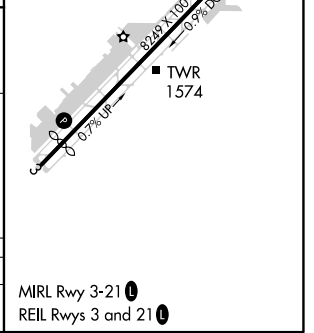
⚠ When VGSI inoperative, circling Rwy 21 NA at night. When local altimeter setting not received, use Phoenix Sky Harbor Intl altimeter setting and increase all MDA 100 feet, increase Cat C visibility ¼ mile and Cat D visibility ½ mile. DME/DME RNP-0.3 NA.

⚠ MISSED APPROACH: Climbing right turn to 5000 direct WILUP and hold, continue climb-in-hold to 5000.

ATIS ★ 118.6	PHOENIX APP CON 120.7 239.0	SCOTTSDALE TOWER ★ 119.9 (CTAF) 0	GND CON 121.6	CLNC DEL 124.8
------------------------	---------------------------------------	---	-------------------------	--------------------------



CATEGORY	A	B	C	D
CIRCLING	2080-1	570 (600-1)	2160-2	650 (700-2)



SW-4, 08 OCT 2020 to 05 NOV 2020

SW-4, 08 OCT 2020 to 05 NOV 2020