

APP CRS	Rwy Idg	<b>5070</b>
<b>261°</b>	TDZE	<b>934</b>
	Apt Elev	<b>934</b>

# RNAV (GPS) RWY 26

DODGE COUNTY (UNU)

**⚠** When local altimeter setting not received, use Dane County Rgnl-Truax Field altimeter setting and increase all MDAs 100 feet, and increase Circling Cat C visibility ¼ SM. DME/DME RNP-0.3 NA. Visibility reduction by helicopters NA. Inoperative table does not apply.

MALSF

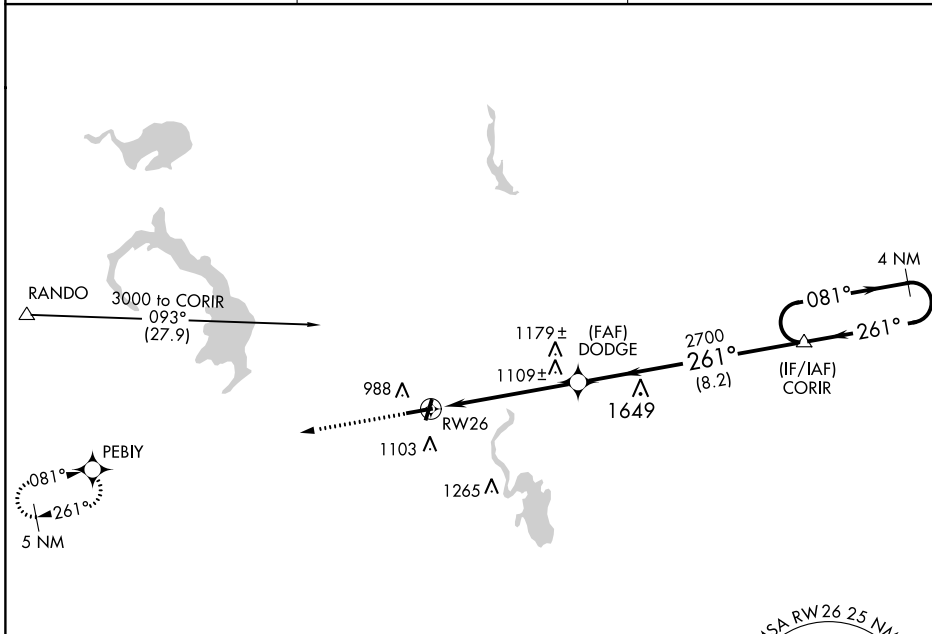


MISSED APPROACH: Climb to 3000 direct PEBIY and hold.

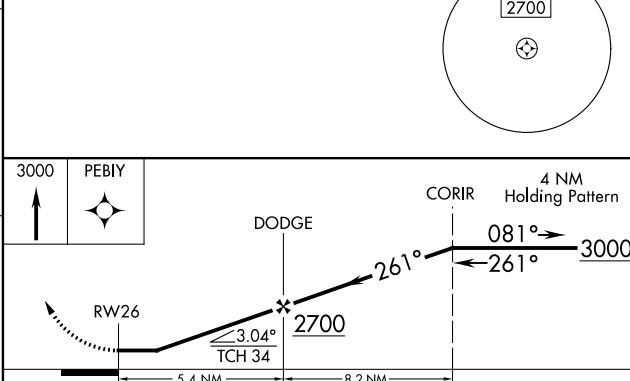
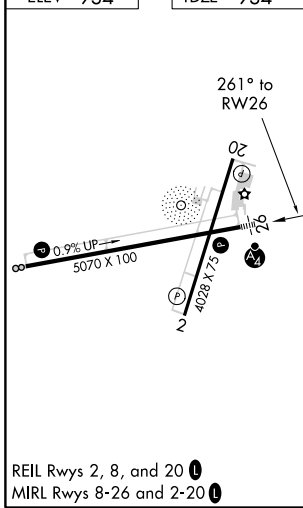
AWOS-3	<b>120.825</b>
--------	----------------

MADISON APP CON	<b>119.15 343.7</b>
-----------------	---------------------

UNICOM	<b>122.7 (CTAF) 1</b>
--------	-----------------------



ELEV 934	TDZE 934
----------	----------



CATEGORY	A	B	C	D
LNAV MDA	1360-1	426 (500-1)	1360-1¼ 426 (500-1¼)	NA
<b>C</b> CIRCLING	1440-1	506 (600-1)	1440-1½ 506 (600-1½)	NA

EC-3, 08 OCT 2020 to 05 NOV 2020

EC-3, 08 OCT 2020 to 05 NOV 2020