

LOC/DME I-JNE 109.55	APP CRS 261°	Rwy Idg TDZE Apt Elev	5070 934 934
Chan 32 (Y)			

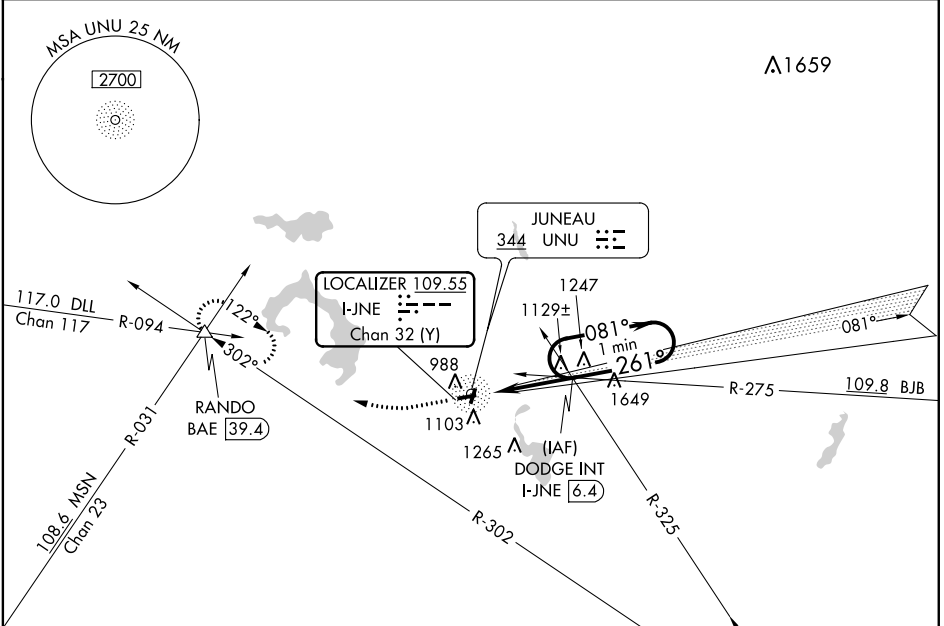
LOC RWY 26
DODGE COUNTY (UNU)

⚠ When local altimeter setting not received, use Dane County Rgnl-Truax Field altimeter setting and increase all MDAs 100 feet, and increase Circling Cat C visibility ¼ SM. Inoperative table does not apply. Visibility reduction by helicopters NA.

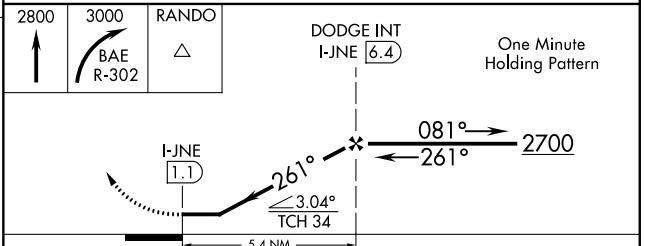
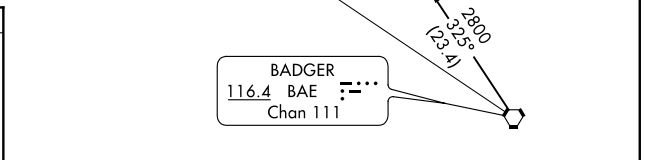
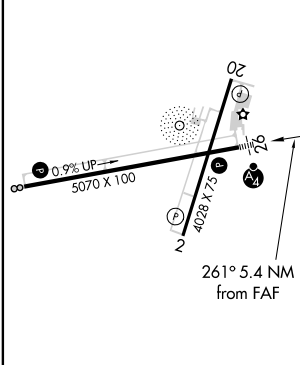


MISSED APPROACH: Climb to 2800 then climbing right turn to 3000 via BAE VORTAC R-302 to RANDO Int/BAE 39.4 DME and hold.

AWOS-3 120.825	MADISON APP CON 119.15 343.7	UNICOM 122.7 (CTAF) 0
--------------------------	--	---------------------------------



ELEV 934	TDZE 934
----------	----------



REIL Rws 2, 8, and 20
MIRL Rws 8-26 and 2-20

FAF to MAP 5.4 NM

Knots	60	90	120	150	180
Min:Sec	5:24	3:36	2:42	2:10	1:48

CATEGORY	A	B	C	D
S-26	1380-1	446 (500-1)	1380-1¼ 446 (500-1¼)	NA
C CIRCLING	1440-1	506 (600-1)	1440-1½ 506 (600-1½)	NA

EC-3, 08 OCT 2020 to 05 NOV 2020

EC-3, 08 OCT 2020 to 05 NOV 2020