

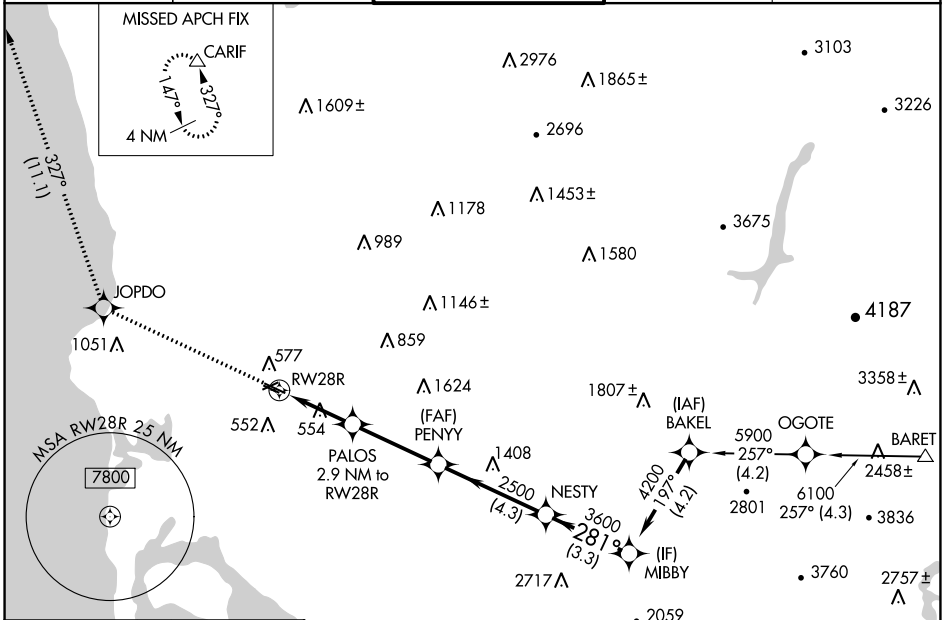
WAAS CH <b>45710</b> <b>W28A</b>	APP CRS <b>281°</b>	Rwy Idg TDZE <b>423</b> Apt Elev <b>427</b>	<b>3399</b>
--	------------------------	---	-------------

# RNAV (GPS) RWY 28R

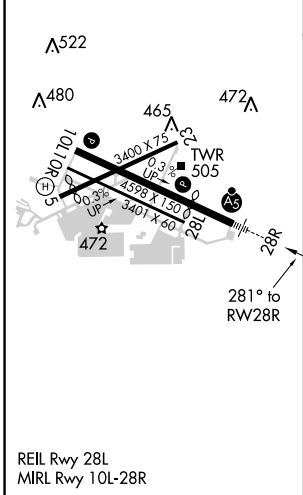
MONTGOMERY-GIBBS EXECUTIVE (M.Y.F.)

RNP APCH.	MALSR	MISSED APPROACH: Climb to 3000 direct JOPDO and on track 327° to CARIF and hold.
<p>▼ Rwy 28R helicopter visibility reduction below ¾ SM NA.</p> <p>▲ For uncompensated Baro-VNAV systems, LNAV/VNAV NA below -15°C or above 54°C.</p>		

ATIS <b>126.9</b>	SOCAL APP CON <b>124.35 279.625</b>	MONTGOMERY TOWER ★ <b>119.2 (CTAF) 0 269.4</b>	GND CON <b>118.225</b>	CLNC DEL <b>123.725</b>
----------------------	--	---	---------------------------	----------------------------



ELEV <b>427</b>	TDZE <b>423</b>
-----------------	-----------------



3000	JOPDO	CARIF				
↑	✧	tr 327°	△			
*LNAV only						
	RWY 28R	PALOS 2.9 NM to RWY 28R	PENNY 2500	NESTY 3600	MIBBY 4200	GP 3.00° TCH 41
	1.2 NM	1.7 NM	3.4 NM	4.3 NM	3.3 NM	
CATEGORY	A	B	C	D		
LPV DA	673-¾	250 (300-¾)			NA	
LNAV/VNAV DA	750-¾	327 (400-¾)			NA	
LNAV MDA	840-¾	417 (500-¾)			NA	
CIRCLING	920-1	493 (500-1)			NA	

SW-3, 08 OCT 2020 to 05 NOV 2020

SW-3, 08 OCT 2020 to 05 NOV 2020