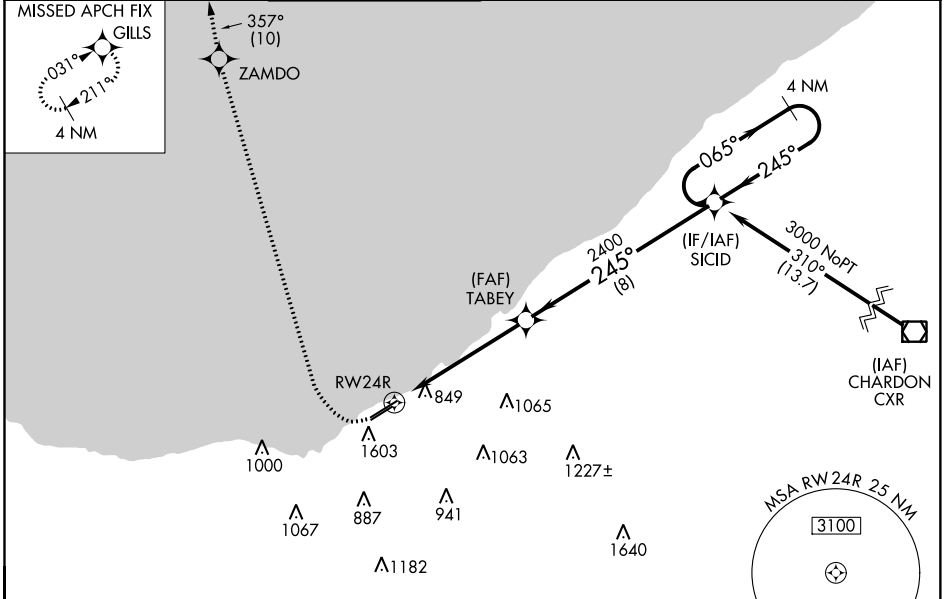


WAAS CH 77621 W24A	APP CRS 245°	Rwy Idg TDZE Apt Elev	6003 583 584
--	------------------------	-----------------------------	---

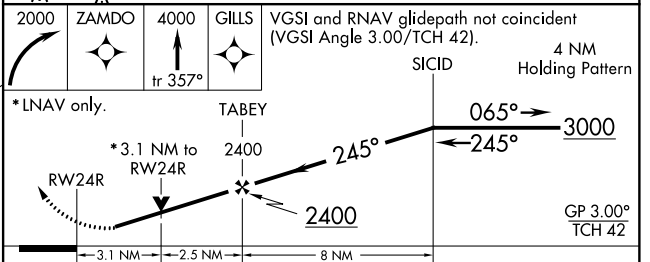
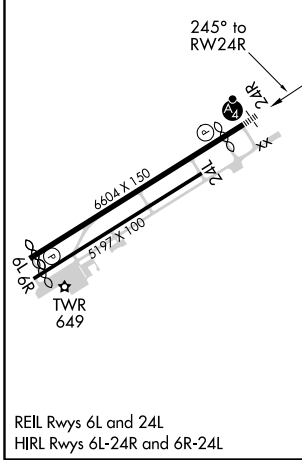
RNAV (GPS) RWY 24R

BURKE LAKEFRONT (BKL)

RNP APCH.		<p>For uncompensated Baro-VNAV systems, LNAV/VNAV NA below -16°C (4°F) or above 40°C (104°F). Circling Rwy 6R NA at night. Rwy 24R helicopter visibility reduction below ¾ SM NA. Circling NA southeast of Rwy 6R and 24L. For inop ALS, increase LNAV Cat C and D visibility to 3 SM.</p>		<p>MALSF</p>		<p>MISSED APPROACH: Climbing right turn to 2000 direct ZAMDO then climb to 4000 on track 357° to GILLS and hold. # Missed approach requires minimum climb of 421 feet per NM to 1900.</p>	
ATIS 125.25	CLEVELAND APP CON 125.35 346.325	LAKEFRONT TOWER ★ 124.3 (CTAF) 0 339.8	GND CON 121.9 339.8	CLNC DEL 339.8	CLNC DEL 121.9 (when twr closed)	UNICOM 122.95	



ELEV	584	D	TDZE	583
------	------------	----------	------	------------



CATEGORY	A	B	C	D
LPV DA	1401-2½		818 (900-2½)	
LPV DA #	NA		1249-1⅞ 666 (700-1⅞)	
LNAV/VNAV DA	1324-2½		741 (800-2½)	
LNAV MDA	1620-1 1037 (1100-1)	1620-1¼ 1037 (1100-1¼)	1620-2½	1037 (1100-2½)
CIRCLING	1620-1¼	1036 (1100-1¼)	1620-3	1036 (1100-3)

EC-2, 08 OCT 2020 to 05 NOV 2020

EC-2, 08 OCT 2020 to 05 NOV 2020