

WAAS CH <b>86211</b> <b>W23A</b>	APP CRS <b>232°</b>	Rwy Idg <b>5999</b> TDZE <b>723</b> Apt Elev <b>727</b>
--	------------------------	---

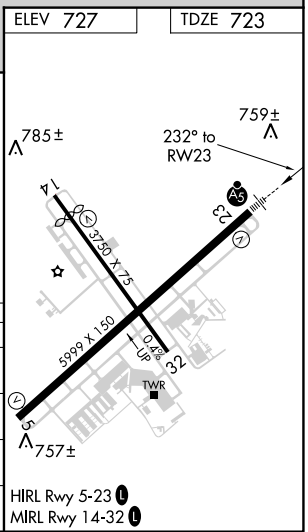
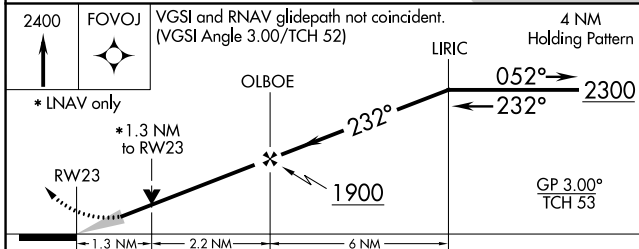
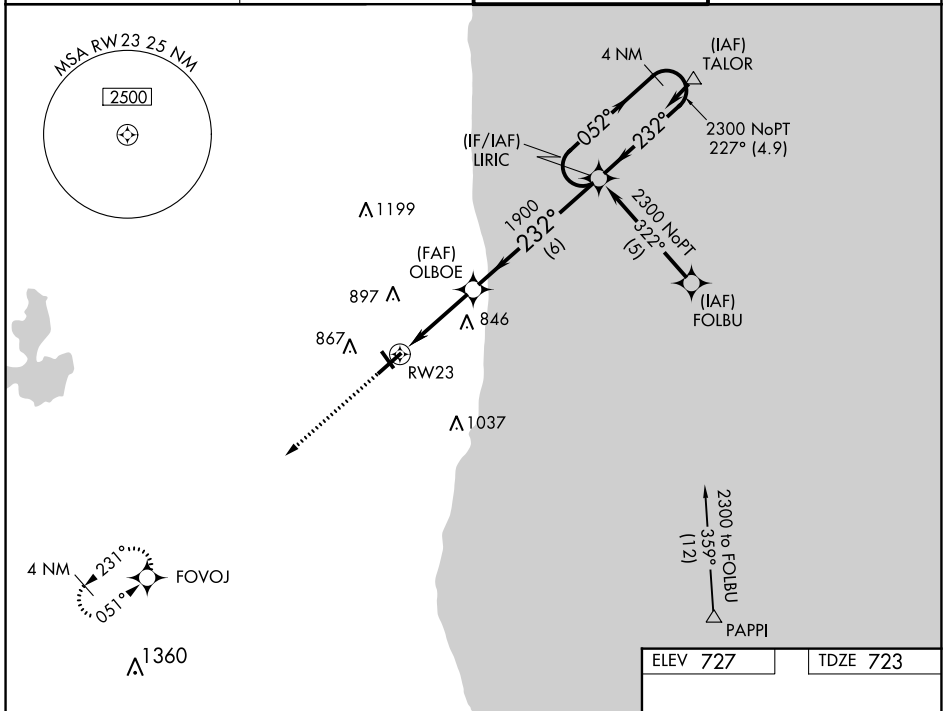
# RNAV (GPS) RWY 23

WAUKEGAN NATIONAL (UGN)

**⚠** Circling to Rwy 14, 32 NA at night. For uncompensated Baro-VNAV systems, LNAV/VNAV NA below -16°C (4°F) or above 54°C (130°F), DME/DME RNP-0.3 NA. For inoperative ALS, increase LNAV/VNAV all Cats visibility to ½ SM.

**MALSR**  
**AS**  
MISSED APPROACH: Climb to 2400 direct FOVOJ and hold.

ATIS <b>132.4</b>	CHICAGO APP CON <b>120.55</b>	WAUKEGAN TOWER ★ <b>120.05 (CTAF) 0 273.55</b>	GND CON <b>121.65</b>
----------------------	----------------------------------	---	--------------------------



CATEGORY	A	B	C	D
LPV DA	980-½ 257 (300-½)			
LNAV/VNAV DA	1020-½ 297 (300-½)		1020-¾ 297 (300-¾)	
LNAV MDA	1160-½ 437 (500-½)	1160-¾ 437 (500-¾)	1160-1 437 (500-1)	1160-1 437 (500-1)
<b>CIRCLING</b>	1220-1 493 (500-1)	1220-½ 493 (500-½)	1400-2¼ 673 (700-2¼)	1400-2¼ 673 (700-2¼)

EC-3, 08 OCT 2020 to 05 NOV 2020

EC-3, 08 OCT 2020 to 05 NOV 2020