

WAAS CH <b>78422</b> <b>W34A</b>	APP CRS <b>344°</b>	Rwy Idg <b>4125</b> TDZE <b>138</b> Apt Elev <b>141</b>
--	------------------------	---

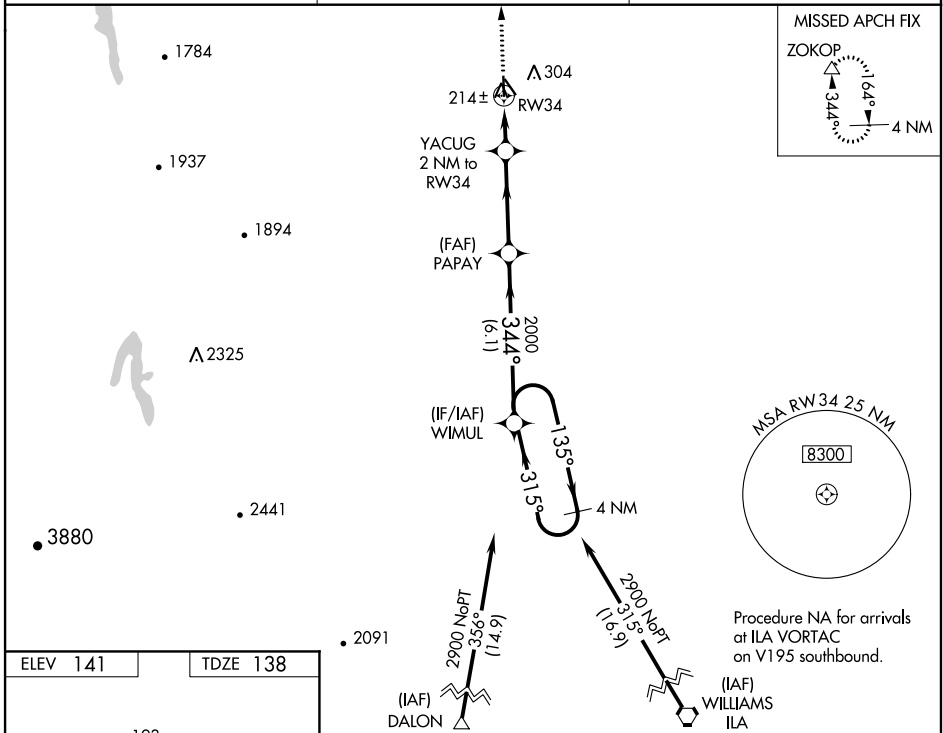
# RNAV (GPS) RWY 34

WILLOWS-GLENN COUNTY (WLW)

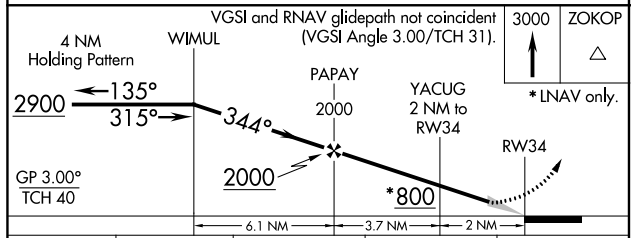
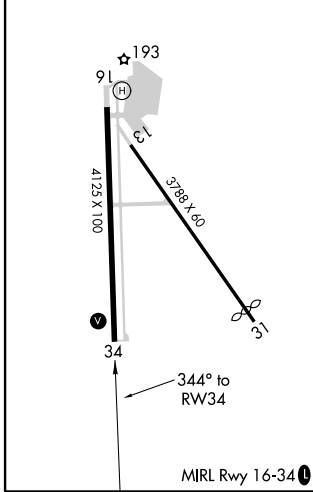
**NA** When Orville Muni altimeter setting not received, procedure NA.  
Baro-VNAV NA. DME/DME RNP-0.3 NA. Use Orville altimeter setting.

MISSED APPROACH: Climb to 3000 direct ZOKOP and hold.

OVE ASOS <b>121.425</b>	OAKLAND CENTER <b>132.2 350.3</b>	UNICOM <b>122.8 (CTAF)</b>
----------------------------	--------------------------------------	-------------------------------



ELEV 141	TDZE 138
----------	----------



CATEGORY	A	B	C	D
LPV DA	460-1½	322 (400-1½)		NA
LNAV/VNAV DA	460-1½	322 (400-1½)		NA
LNAV MDA	540-1	402 (400-1)	540-1½ 402 (400-1½)	NA
<b>C</b> CIRCLING	680-1	539 (600-1)	680-1½ 539 (600-1½)	NA

SW-2, 08 OCT 2020 to 05 NOV 2020

SW-2, 08 OCT 2020 to 05 NOV 2020