

AIRPORT DIAGRAM

AL-5240 (FAA)

UNIVERSITY PARK (UNV)
STATE COLLEGE, PENNSYLVANIA

ATIS
127.65
UNIVERSITY PARK ★
128.475
GND CON
119.625
CLNC DEL
119.625
118.55 (When Tower Closed)

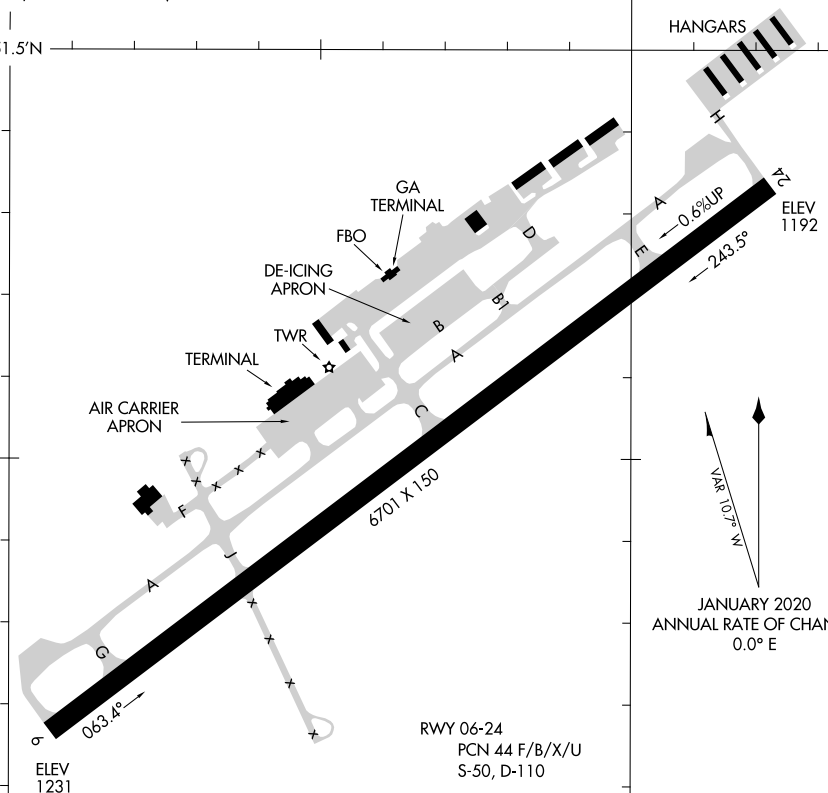
D

FIELD ELEV 1231

40°51.5'N

HANGARS

NE-4, 08 OCT 2020 to 05 NOV 2020



NE-4, 08 OCT 2020 to 05 NOV 2020

40°50.5'N

JANUARY 2020
 ANNUAL RATE OF CHANGE
 0.0° E

CAUTION: BE ALERT TO RUNWAY CROSSING CLEARANCES.
READBACK OF ALL RUNWAY HOLDING INSTRUCTIONS IS REQUIRED.

77°51.5'W

77°50.5'W

AIRPORT DIAGRAM

STATE COLLEGE, PENNSYLVANIA
UNIVERSITY PARK (UNV)