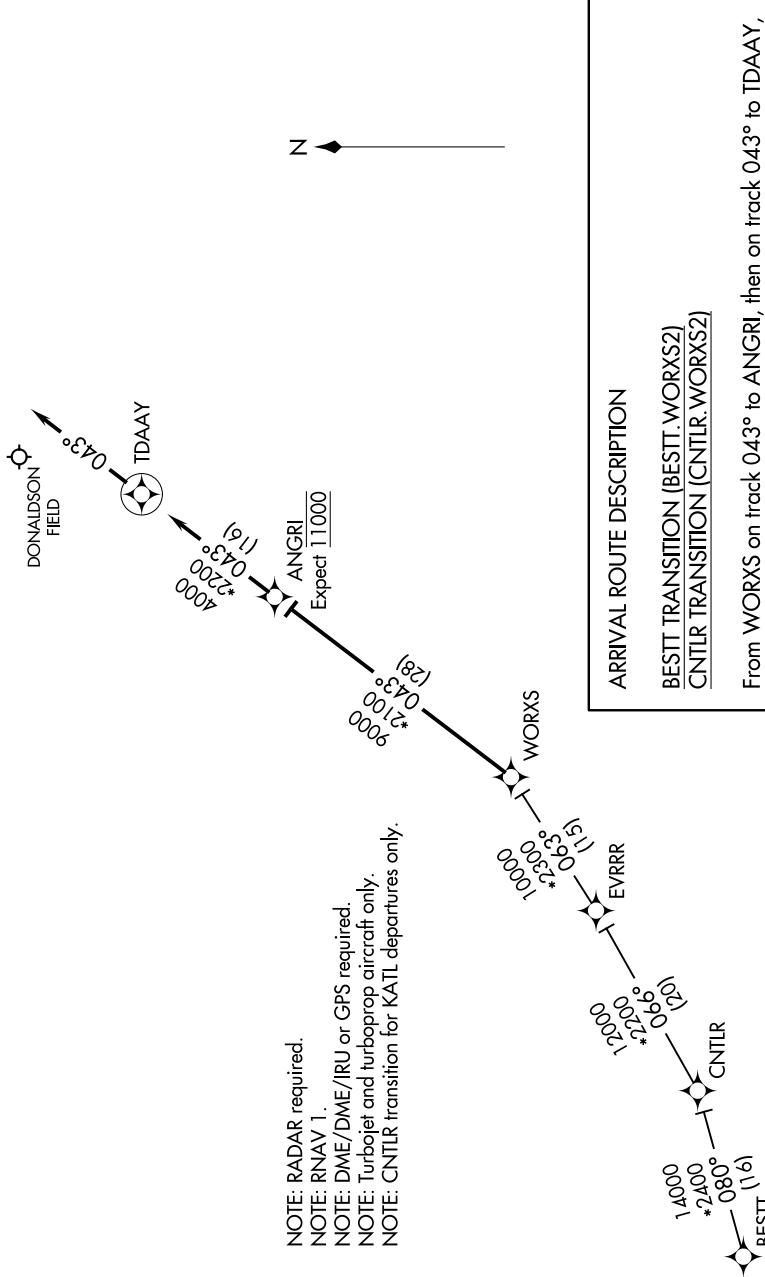


WORXS TWO ARRIVAL(RNAV)

GREER, SOUTH CAROLINA

SE-2, 08 OCT 2020 to 05 NOV 2020

GREER APP CON
118.8 270.275 (WEST)
119.4 350.2 (EAST)
GSP ATIS
134.25



- NOTE: RADAR required.
- NOTE: RNAV 1.
- NOTE: DME/DME/IRU or GPS required.
- NOTE: Turbojet and turboprop aircraft only.
- NOTE: CNTLR transition for KATL departures only.

ARRIVAL ROUTE DESCRIPTION

BESTT TRANSITION (BESTT.WORXS2)

CNTLR TRANSITION (CNTLR.WORXS2)

From WORXS on track 043° to ANGR1, then on track 043° to TDAAY, then on heading 043°. Expect RADAR vectors to final approach course.

NOTE: Chart not to scale.

SE-2, 08 OCT 2020 to 05 NOV 2020

WORXS TWO ARRIVAL(RNAV)

GREER, SOUTH CAROLINA