

WAAS CH <b>69204</b> <b>W33A</b>	APP CRS <b>336°</b>	Rwy Idg <b>5950</b> TDZE <b>4316</b> Apt Elev <b>4316</b>
--	------------------------	---

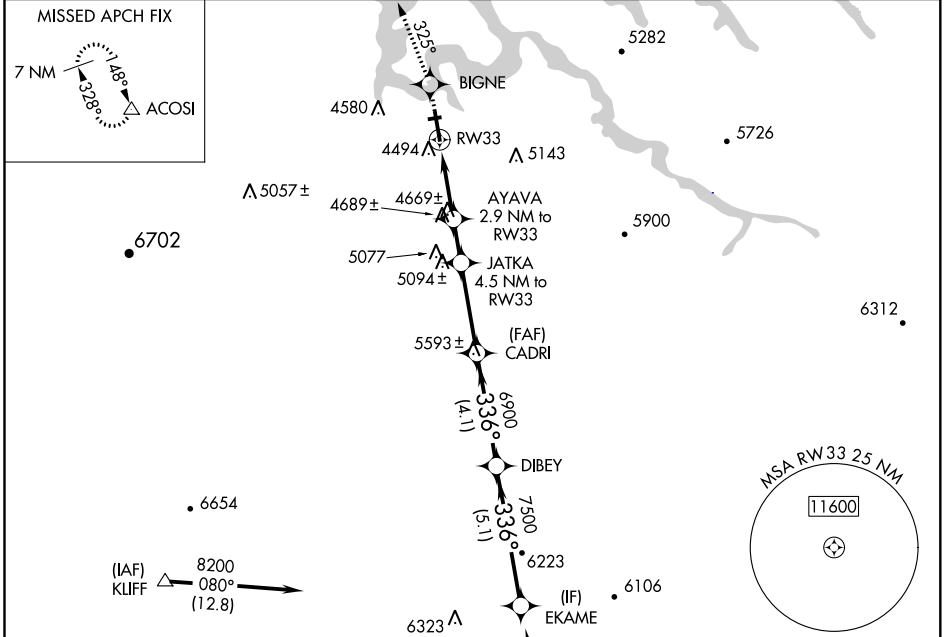
# RNAV (GPS) RWY 33

PAGE MUNI (PGA)

**▽** For uncompensated Baro-VNAV systems, LNAV/VNAV NA below -23°C (-9°F) or above 41°C (105°F).  
DME/DME RNP-0.3 NA. Circling NA to Rwy 7-25.

MISSED APPROACH: Climb to 8500 direct BIGNE and via 325° track to ACOSI and hold, continue climb-in-hold to 8500.

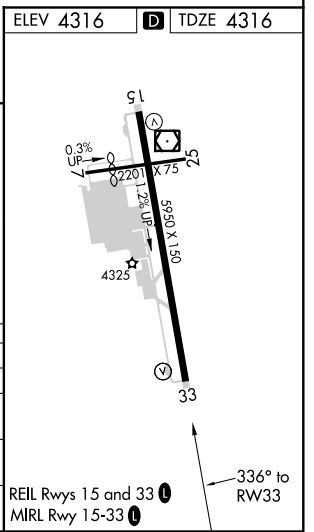
ASOS <b>120.625</b>	DENVER CENTER <b>127.55 256.875</b>	UNICOM <b>122.8 (CTAF)</b> <b>0</b>
------------------------	--	--



Procedure NA for arrivals at CELAY via V208 southbound.

ELEV 4316	<b>D</b> TDZE 4316
-----------	--------------------

8500	BIGNE	ACOSI	VGSI and RNAV glidepath not coincident (VGSI Angle 3.00/TCH 30).			EKAME
↑	325° tr	△	JATKA	CADRI	DIBEY	8200
*LNAV only.		AYAVA	4.5 NM to RW33			Procedure Turn NA
*1.8 NM to RW33		RW33	5280	5800	6900	GP 3.00° TCH 50
1.8 NM	1.1 NM	1.6 NM	3.3 NM	4.1 NM	5.1 NM	
CATEGORY	A	B	C	D		
LPV DA	4566-1		250 (300-1)			
LNAV/VNAV DA	4744-1½		428 (500-1½)			
LNAV MDA	4920-1	604 (700-1)	4920-1¾	604 (700-1¾)	4920-2	604 (700-2)
CIRCLING	4920-1	604 (700-1)	4920-1¾	604 (700-1¾)	4920-2	604 (700-2)



SW-4, 08 OCT 2020 to 05 NOV 2020

SW-4, 08 OCT 2020 to 05 NOV 2020