
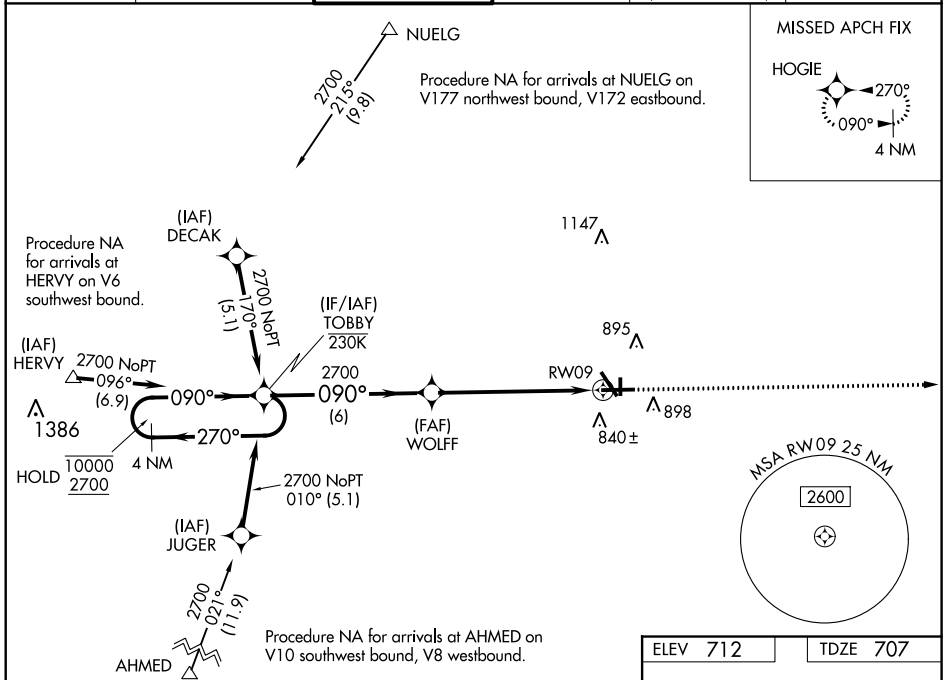


WAAS CH 45522 W09A	APP CRS 090°	Rwy Idg TDZE Apt Elev	6501 707 712
--	------------------------	-----------------------------	---

RNAV (GPS) RWY 9

AURORA MUNI (A.R.R.)

RNP APCH.		AURORA TOWER* 120.6 (CTAF) 0		GND CON 121.7	CLNC DEL 121.7 (When tower closed)	UNICOM 122.95 123.5
<p>▼ For uncompensated Baro-VNAV systems, LNAV/VNAV NA below -20°C or above 54°C. For inop ALS, increase LNAV Cat C/D visibility to 1½ SM.</p>		<p>MALSRL</p> 		<p>MISSED APPROACH: Climb to 2500 direct HOGIE and hold.</p>		



4 NM Holding Pattern		TOBBY		WOLFF		RW09	
10000 2700		← 270°		→ 090°		* 1.5 NM to RW09	
GP 3.00° TCH 45		6 NM		4.6 NM		1.5 NM	
CATEGORY	A	B		C		D	
LPV DA		957-½		250 (300-½)			
LNAV/VNAV DA		1035-½		328 (400-½)			
LNAV MDA	1220-½	513 (600-½)		1220-1		513 (600-1)	
CIRCLING	1220-1	508 (600-1)		1220-1½ 508 (600-1½)		1320-2 608 (700-2)	

ELEV 712	TDZE 707
----------	----------

2500 HOGIE

*LNAV only.

MIRL Rwy 18-36 **0**
HIRL Rwy 15-33 and 9-27 **0**
REIL Rwy 15, 18, 27, and 36 **0**

EC-3, 08 OCT 2020 to 05 NOV 2020

EC-3, 08 OCT 2020 to 05 NOV 2020