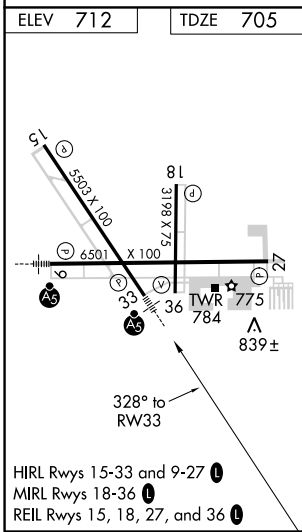
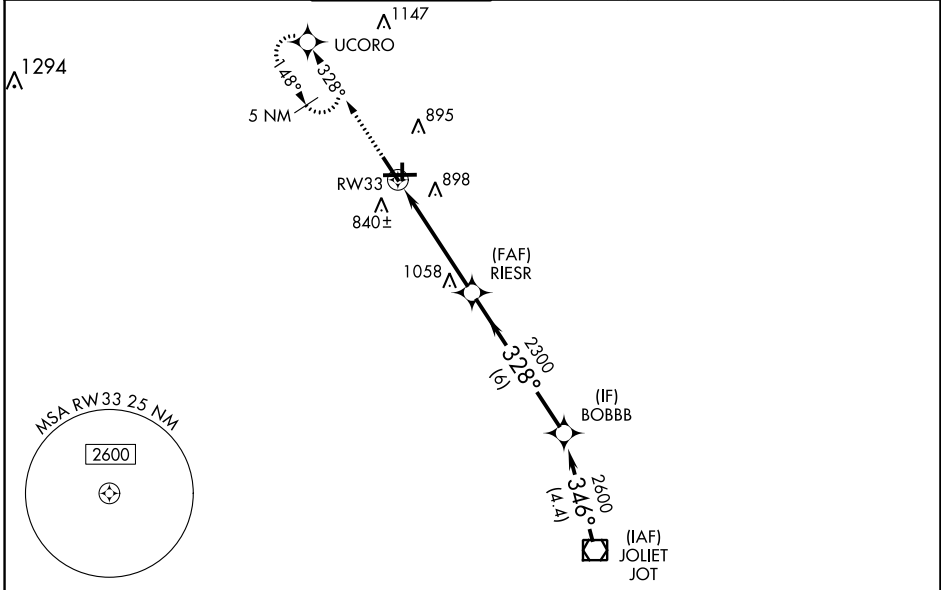


WAAS CH 49105 W33A	APP CRS 328°	Rwy Idg 5503 TDZE 705 Apt Elev 712
--	------------------------	---

RNAV (GPS) RWY 33

AURORA MUNI (A.R.R.)

RNP APCH. ▼ For uncompensated Baro-VNAV systems, LNAV/VNAV NA below -16°C or above 54°C. For inop MALSR, increase LPV visibility to 1¼ SM all Cnts, LNAV Cnts A/B visibility to 1 SM.		MALSR 	MISSED APPROACH: Climb to 3000 direct UCORO and hold, continue climb-in-hold to 3000.		
ATIS 125.85	CHICAGO APP CON 133.5 349.0	AURORA TOWER * 120.6 (CTAF) 0	GND CON 121.7	CLNC DEL 121.7 (When tower closed)	UNICOM 122.95 123.5



Procedure NA for arrival on JOT VOR/DME airway radials 314 CW 328.

3000 UCORO	JOT VOR/DME			
*LNAV only.	RW33	RIESR	BOBBB	2600
	*1.3 NM to RW33	2300	328°	346° - 2600
	1.3 NM	3.5 NM	6 NM	4.4 NM
CATEGORY	A	B	C	D
LPV DA	1042-¾		337 (400-¾)	
LNAV/VNAV DA	1194-1¼		489 (500-1¼)	
LNAV MDA	1140-¾		435 (500-¾)	
CIRCLING	1200-1		488 (500-1)	
	488 (500-1)		1200-1½	
	488 (500-1½)		1320-2	
	608 (700-2)		1140-1	
			435 (500-1)	
			GP 3.00°	
			TCH 48	

EC-3, 08 OCT 2020 to 05 NOV 2020

EC-3, 08 OCT 2020 to 05 NOV 2020