

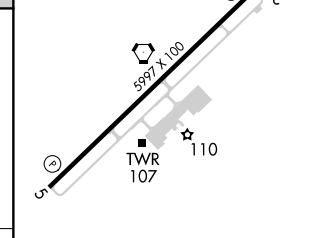
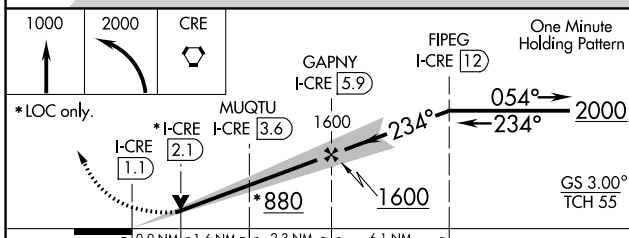
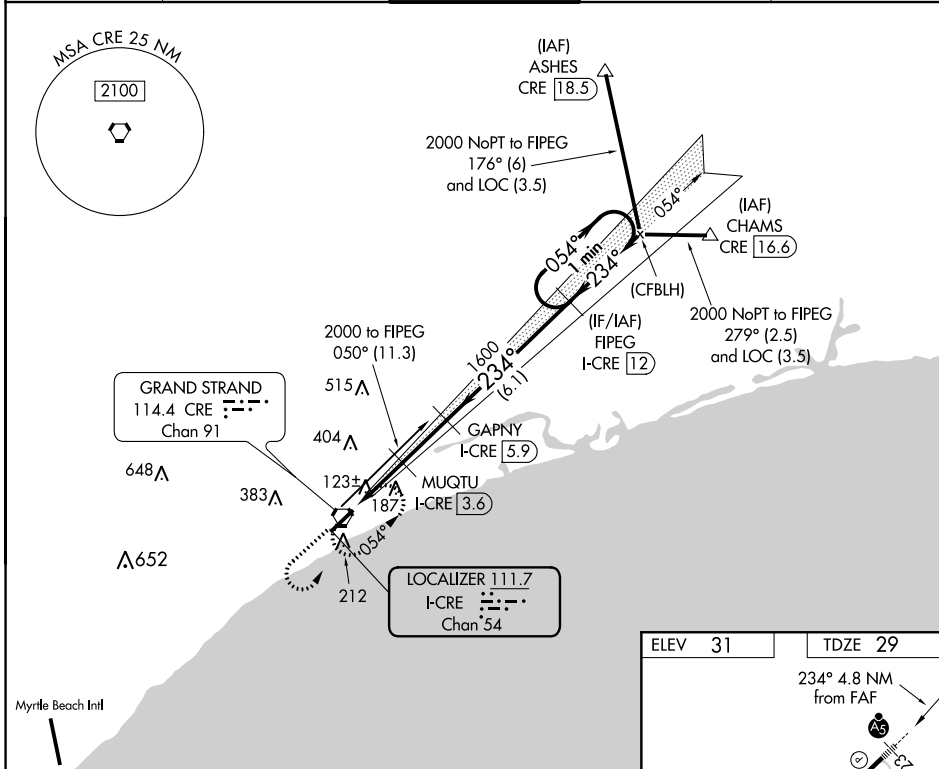
LOC/DME I-CRE 111.7 Chan 54	APP CRS 234°	Rwy Idg TDZE Apt Elev	5997 29 31
---	------------------------	-----------------------------	---------------------------------------

ILS or LOC RWY 23

GRAND STRAND (CRE)

<p>When local altimeter setting not received use Myrtle Beach Intl altimeter setting and increase all DA 31 feet and all MDA 40 feet. For inoperative MALSR, increase S-LOC 23 Cat C and D visibility to 1. VDP NA with Myrtle Beach Intl altimeter setting. DME required.</p>	<p>MALSR</p>	<p>MISSED APPROACH: Climb to 1000 then climbing left turn to 2000 direct CRE VORTAC and hold, continue climb-in-hold to 2000.</p>		
		<p>ATIS 119.625</p>	<p>MYRTLE BEACH APP CON ★ 119.2 350.3</p>	<p>STRAND TOWER ★ 124.6 (CTAF) 257.6</p>

ATIS 119.625	MYRTLE BEACH APP CON ★ 119.2 350.3	STRAND TOWER ★ 124.6 (CTAF) 257.6	GND CON 121.8 257.6	UNICOM 122.95
------------------------	--	---	-------------------------------	-------------------------



CATEGORY	A	B	C	D
S-ILS 23	229-½		200 (200-½)	
S-LOC 23	380-½ 351 (400-½)		380-⅝ 351 (400-⅝)	
CIRCLING	520-1 489 (500-1)		520-1½ 720-2¼ 489 (500-1½) 689 (700-2¼)	

ELEV 31 TDZE 29

234° 4.8 NM from FAF

5997 x 100

TWR 107

110

HIRL Rwy 5-23

REIL Rwy 5

SE-2, 08 OCT 2020 to 05 NOV 2020

SE-2, 08 OCT 2020 to 05 NOV 2020